



## COVID-19 Vaccination Report – Two Rivers Health District : Dec 15 – May 18, 2021

The graphs depict the current status of COVID-19 vaccination in Two Rivers Public Health District (TRPHD) as of May 11, 2021. This includes residents of **Buffalo, Dawson, Franklin, Gosper, Harlan, Kearney & Phelps** counties (97,132). Of these, 76,002 persons are eligible for the vaccine (aged 16 years or more)<sup>1</sup>

- Graphs 1 & 2 show relative number of **residents of each county** who have received one or two shots of the vaccine.
  - **Graph 1** shows the number of TRPHD residents (**16 + years**) per county, and orders counties by decreasing percentage of persons who received one or two doses of the vaccine.
  - **Graphs 2-5** shows the number of persons **aged 16-29, 30-49, 50-64 & 65+ years** in TRPHD, and orders each county by decreasing percentage of persons who received one dose and those fully vaccinated.
- **Graph 5** shows the monthly doses of COVID vaccine received by residents of Two Rivers Health District aged **16-29, 30-49, 50-64 & 65+ years**.
- **Graph 6** describes the monthly doses of COVID vaccine dispensed by **different providers** in Two Rivers Health District.

### Key Takeaways

1. *As of May 17, 2021, 43.5% of TRPHD's population aged 16 years and over has been fully vaccinated. The anticipated addition of younger age groups to eligible residents (children 12-15 years added to eligible list) will reduce overall vaccination rates in the weeks to come.*
2. *Less than one-fifth of those aged 16-29 years are fully vaccinated, and the rate of new vaccinations in this age group has slowed dramatically in May.*
3. *First doses availed in the first two weeks of May have been the lowest since vaccinations first became available in Nebraska in December, in spite of expanded age restrictions and wider availability.*
4. *The slowing down of vaccination rates is a source of concern, as currently only 33% of the total population of TRPHD (including infants, toddlers and adolescents) is fully vaccinated. Specifically, the decline in persons availing first dose of vaccine in Buffalo county is worrying, especially among residents aged 16-29 years. As Buffalo county accounts for 45% of the district's residents, the vaccination proportion of the county greatly influences overall rates*
5. *Two Rivers Health Department has scheduled mass vaccination clinics at multiple sites across the seven counties to distribute vaccines and to focus on areas of potential shortfall. Those eligible for the vaccine are advised to refer to the vaccination clinic schedule at [www.trphd.org](http://www.trphd.org)*

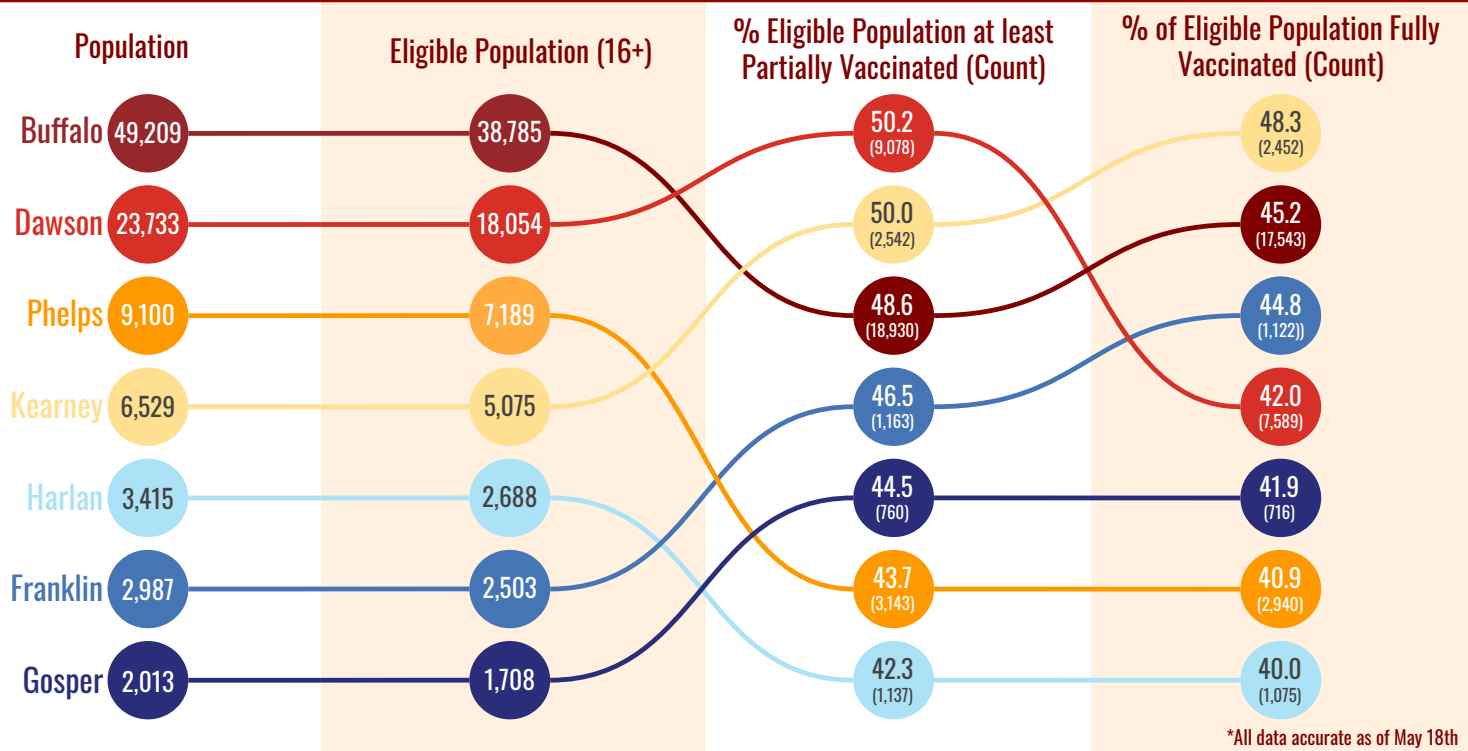
---

<sup>1</sup> For details on eligible persons by county, see appendix 1



- Vaccine formulations by Pfizer and Moderna (2 doses) and Johnson & Johnson (single dose) are calculated accordingly
- Each county is depicted by a colored circle, and the relative position of each corresponds to the proportion vaccinated. Actual numbers (count) are included in parenthesis.
- Data described from Dec 15, 2020 – May 17, 2021. All residents of the seven counties over 16 years are included.
- **Overall, 43.5% of population aged 16 years or more in Two Rivers Health District is now fully vaccinated.**

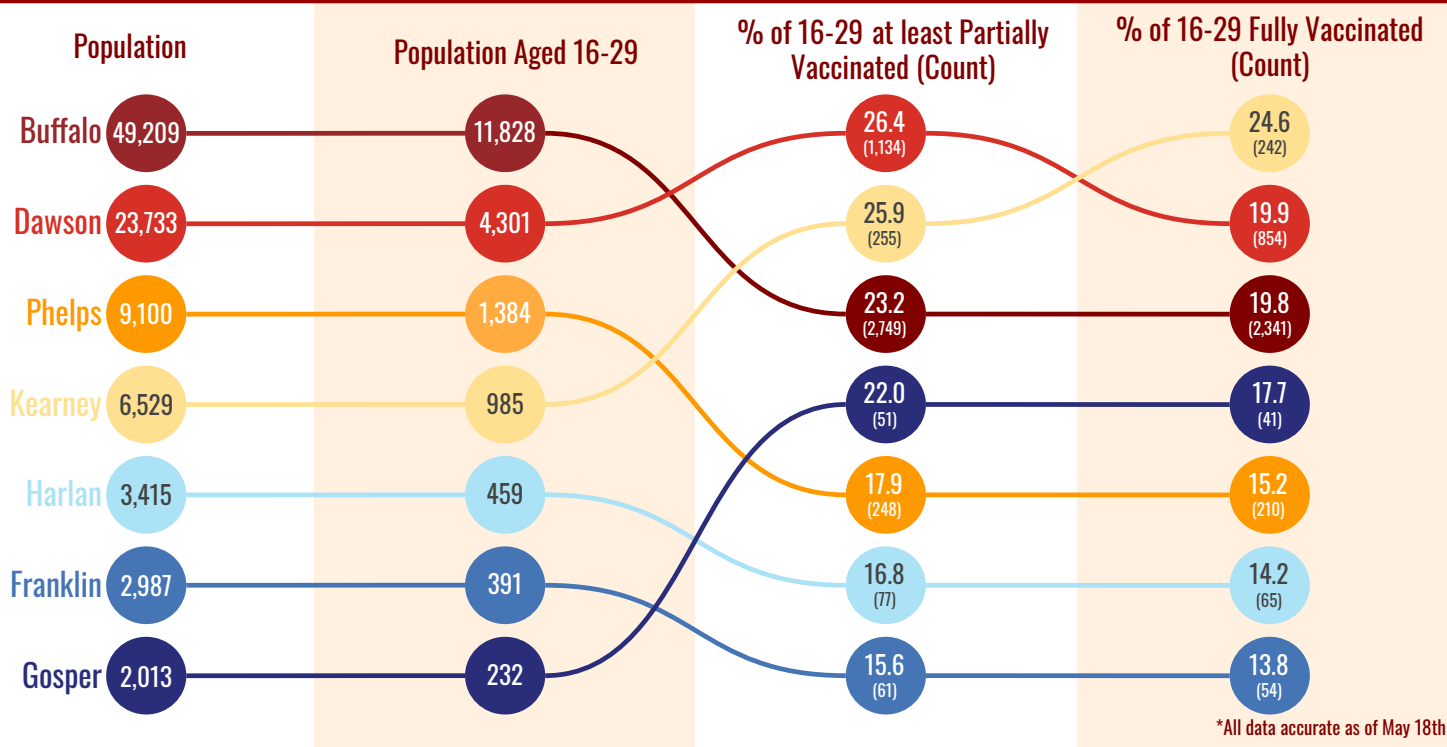
## Vaccinations of Eligible Population in TRPHD





- Vaccine formulations by Pfizer and Moderna (2 doses) and Johnson & Johnson (single dose) are calculated accordingly
- Each county is depicted by a colored circle, and the relative position of each corresponds to the proportion vaccinated. Actual numbers (count) are included in parenthesis.
- Data is described from Dec 15, 2020 - May 17, 2021. All residents of the seven counties aged 16-29 years are included.
- Overall, 19.4% of those aged 16-29 years in Two Rivers Health District are now fully vaccinated.

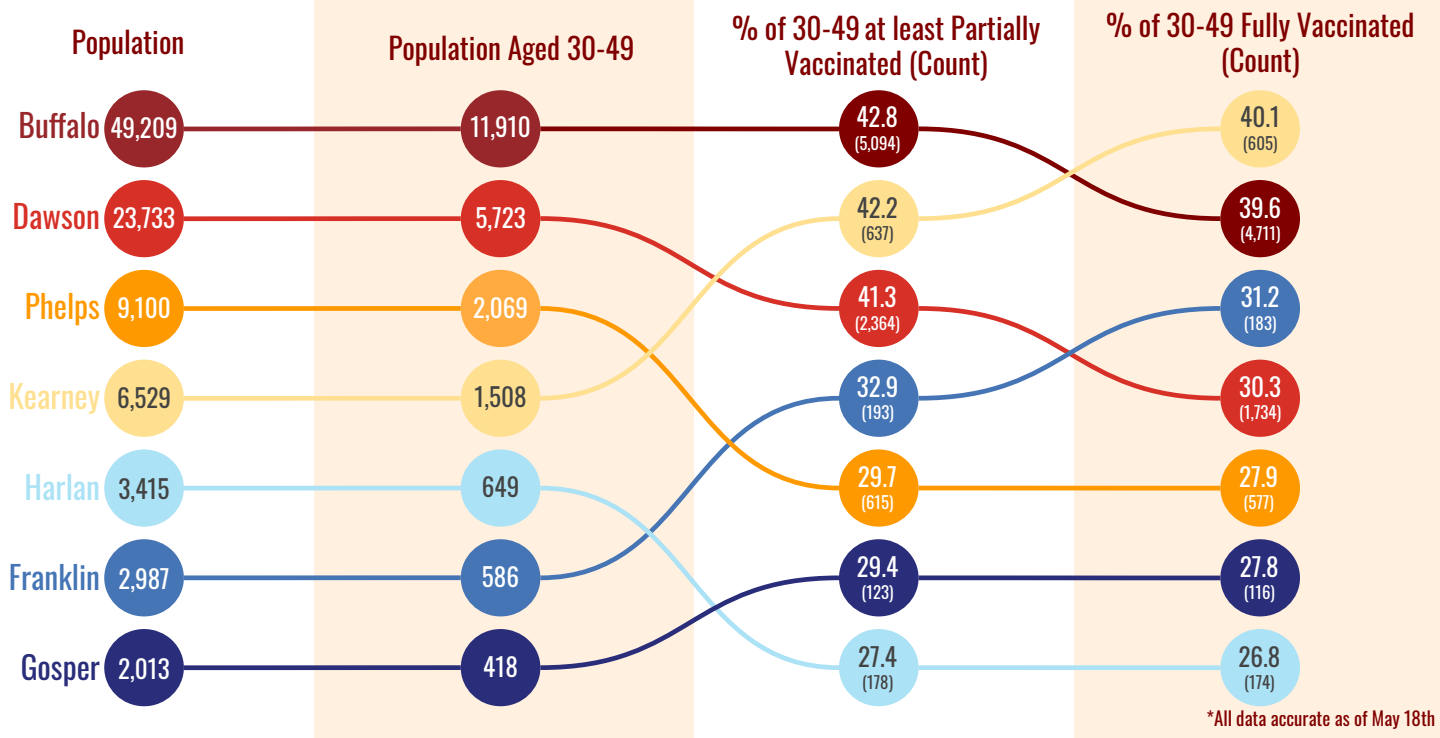
## Vaccinations of 16-29 in TRPHD





- Vaccine formulations by Pfizer and Moderna (2 doses) and Johnson & Johnson (single dose) are calculated accordingly
- Each county is depicted by a colored circle, and the relative position of each corresponds to the proportion vaccinated. Actual numbers (count) are included in parenthesis.
- Data is described from Dec 15, 2020 – May 17, 2021. All residents of the seven counties aged 30-49 years are included.
- Overall, 35.2% of those aged 30-49 years in Two Rivers Health District are now fully vaccinated.

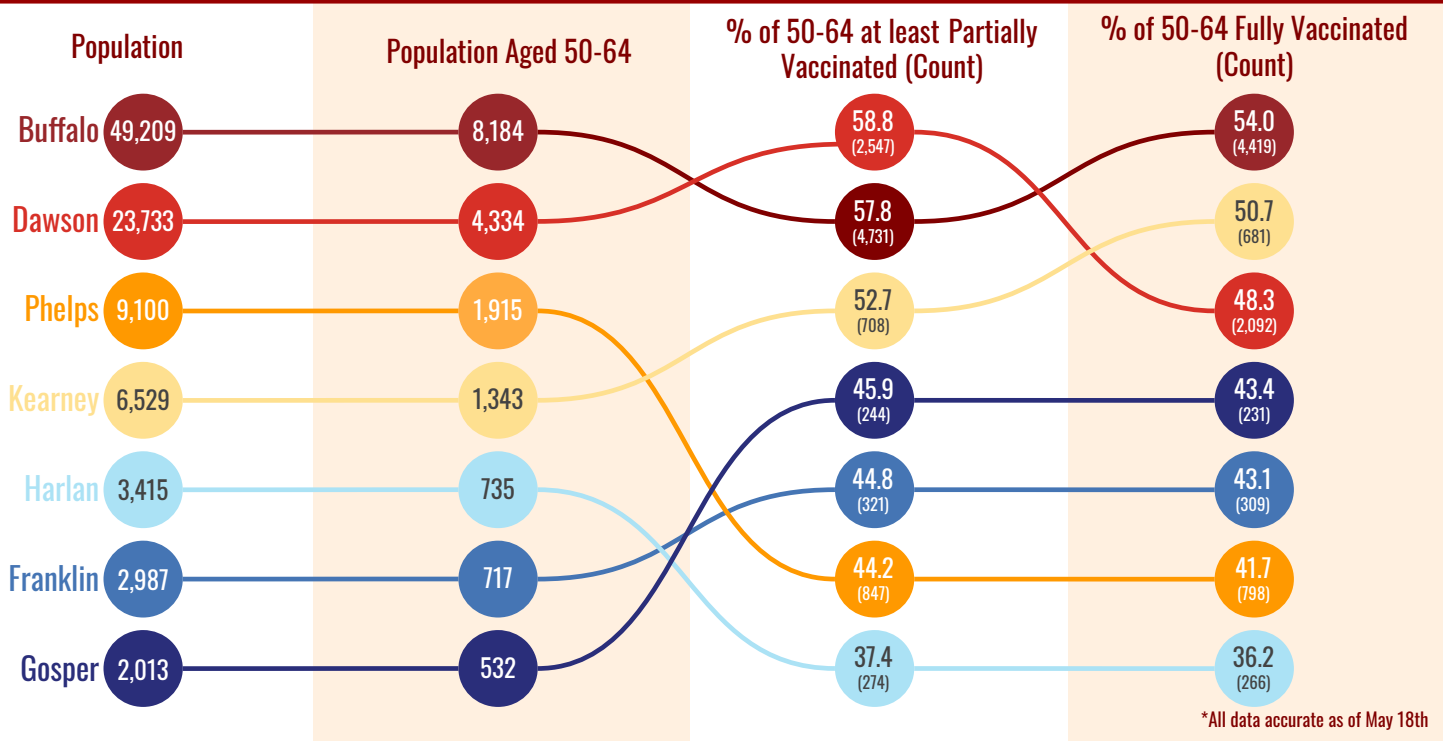
## Vaccinations of 30-49 in TRPHD





- Vaccine formulations by Pfizer and Moderna (2 doses) and Johnson & Johnson (single dose) are calculated accordingly
- Each county is depicted by a colored circle, and the relative position of each corresponds to the proportion vaccinated. Actual numbers (count) are included in parenthesis.
- Data is described from Dec 15, 2020 – May 17, 2021. All residents of the seven counties aged 50-64 years are included.
- **Overall, 49.1% of those aged 50-64 years in Two Rivers Health District are now fully vaccinated.**

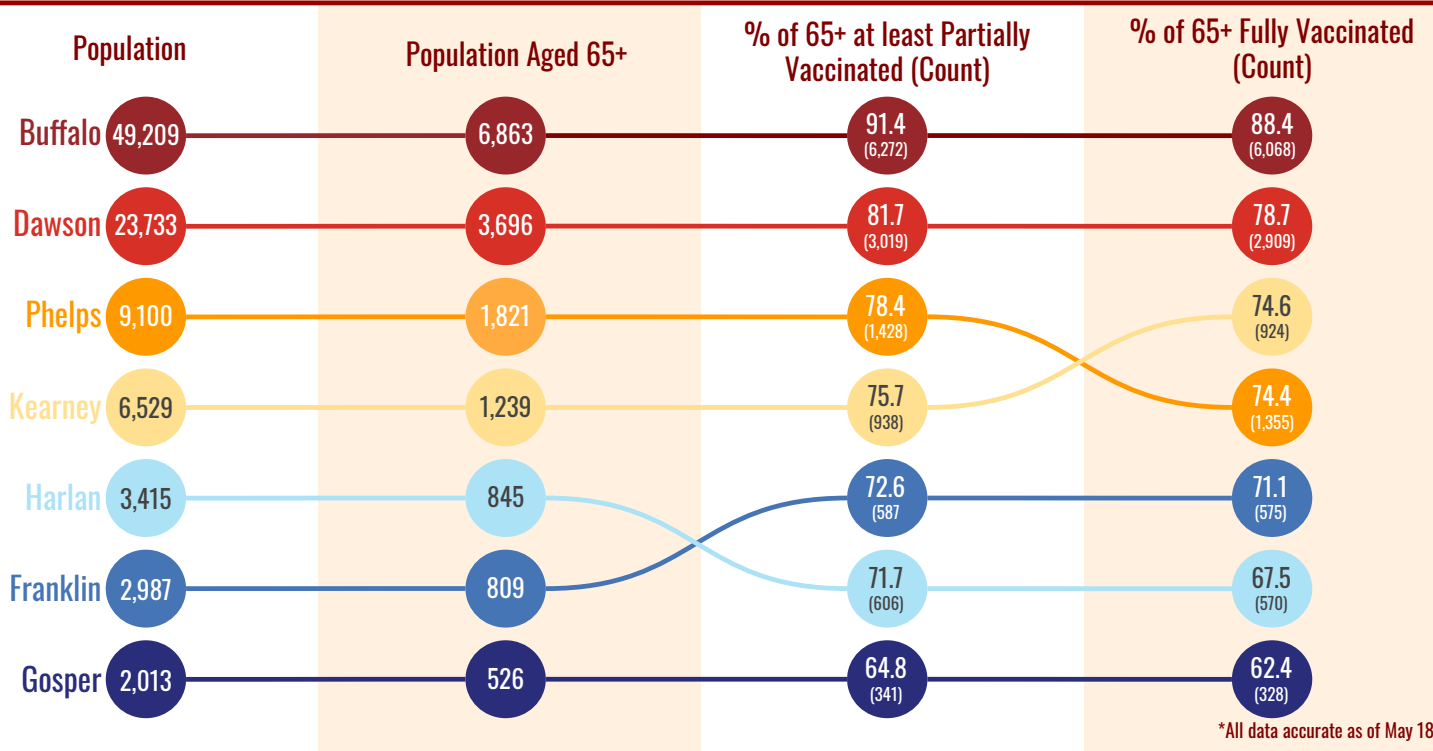
## Vaccinations of 50-64 in TRPHD





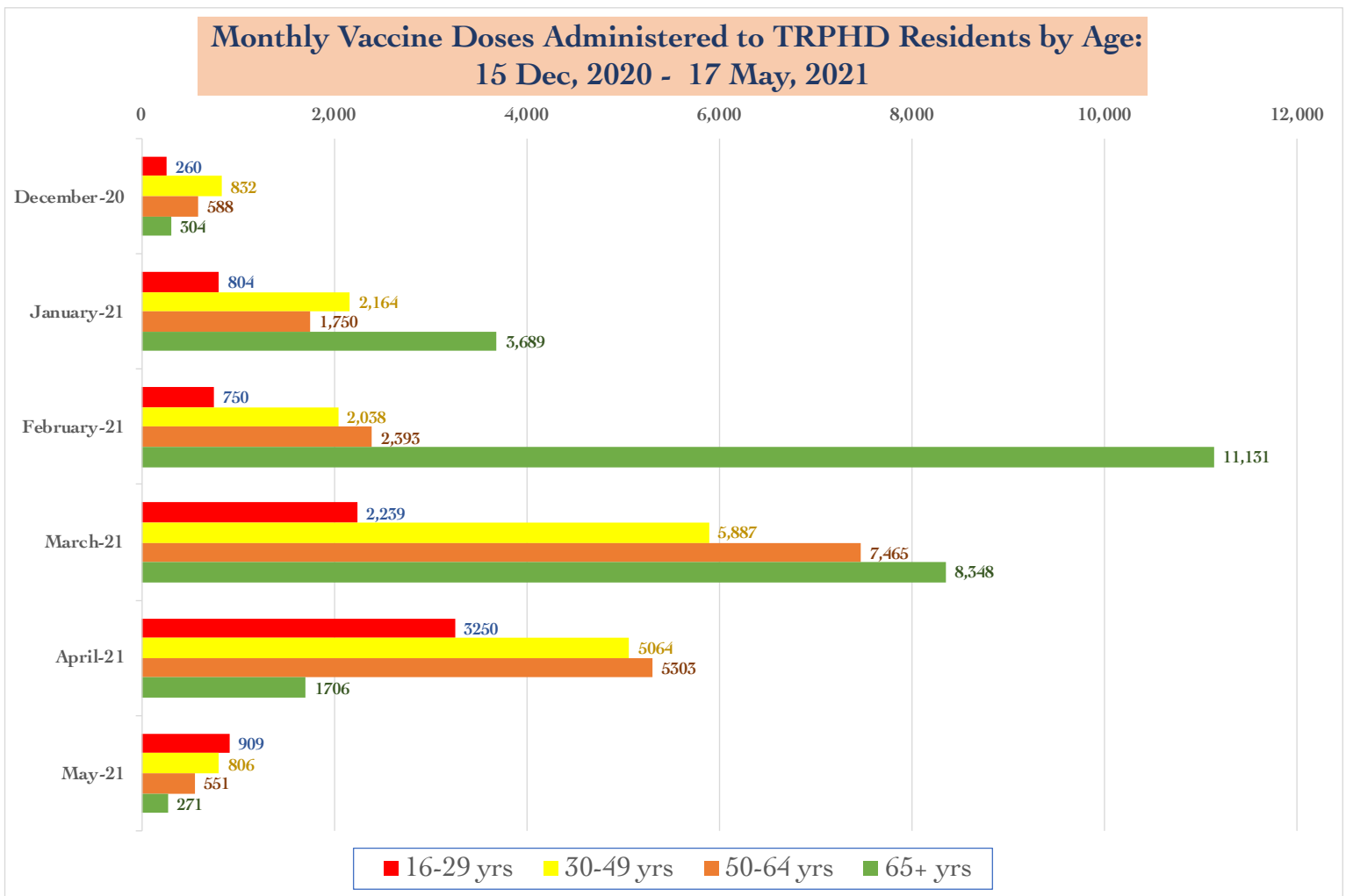
- Vaccine formulations by Pfizer and Moderna (2 doses) and Johnson & Johnson (single dose) are calculated accordingly
- Each county is depicted by a colored circle, and the relative position of each corresponds to the proportion vaccinated. Actual numbers (count) are included in parenthesis.
- Data is described from Dec 15, 2020 - May 17, 2021. All residents of the seven counties aged 65 years and over are included.
- Overall, 79.1% of those aged 65+ years in Two Rivers Health District are now fully vaccinated.

## Vaccinations of 65+ in TRPHD



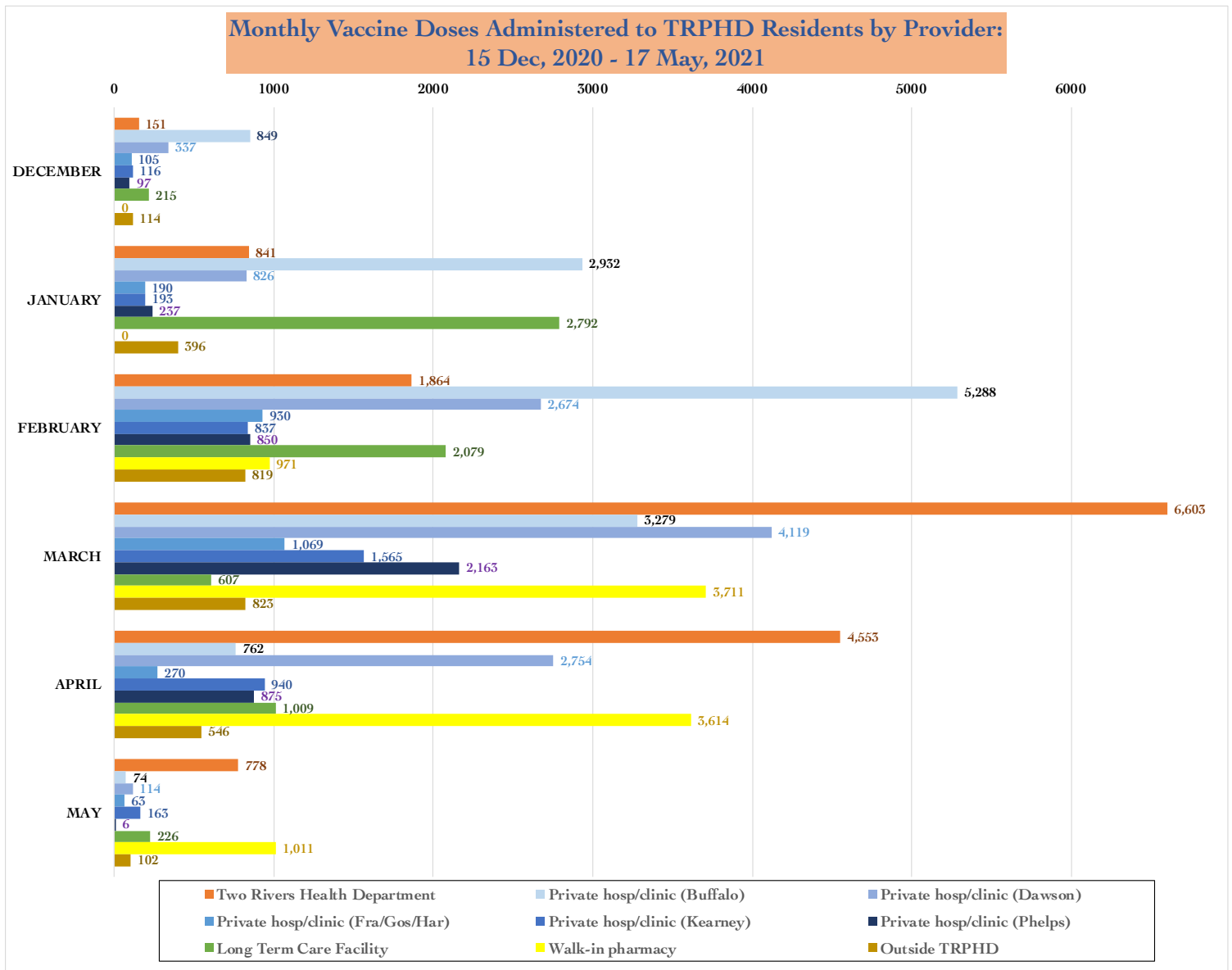


- The graph describes **all doses of COVID vaccine** received by TRPHD residents between December 15, 2020 – May 17, 2021.
- Vaccinated persons are described **by age group** (16-29, 30-49, 50-64, 65+ years). Data is described monthly from December, 2020 – May, 2021.
- Doses in December, 2020 and May, 2021 represent only two weeks of vaccinations each.





- The graph describes **all doses of COVID vaccine** received by TRPHD residents between December 15, 2020 – May 17, 2021.
- Vaccine doses are described by **provider** (TRPHD vaccine clinics, Private Hospitals & Clinics in Buffalo, Dawson, Kearney & Phelps counties individually, Hospitals & Clinics in Franklin, Gosper & Harlan together, Long Term Care Facilities, Walk-In Pharmacies, and outside TRPHD). Data is described monthly from December, 2020 – May, 2021.
- Doses in December, 2020 and May, 2021 represent only two weeks of vaccinations each.







## APPENDIX 1

### Background

The Two Rivers Public Health Department (TRPHD) covers 7 counties in central Nebraska, reaching 97,132 people who live and work in the health district spread across roughly 4663 square miles. Over three quarters of residents live in Buffalo and Dawson county, a tenth live in Phelps county, and the remaining 15% is spread somewhat comparably among the four counties of Kearney, Harlan, Franklin and Gosper in decreasing order of population. The largest cities are Holdrege (pop. 5408), Lexington (pop. 10115) and Kearney (pop. 33867) meaning that well over half the residents of TRPHD live in three cities, and over a third are in Kearney alone. The population of all 7 counties in TRPHD are shown below.

| County             | Population    |
|--------------------|---------------|
| Buffalo            | 49,659        |
| Dawson             | 23,595        |
| Franklin           | 2,979         |
| Gosper             | 1,990         |
| Harlan             | 3,380         |
| Kearney            | 6,495         |
| Phelps             | 9,034         |
| <b>TRPHD total</b> | <b>97,132</b> |
| Nebraska state     | 1,934,408     |
| United States      | 328,239,523   |

### Vaccine-eligible population

The total COVID-19 vaccine-eligible population of Two Rivers Health District is about 76,002. This includes all residents over the age of 16 years living in the seven counties that make up the district. The table below describes the eligible population in each of the seven counties divided by age category.

|                 | 16-29 YRS    | 30-49 YRS    | 50-64 YRS    | 65+ YRS      | TOTAL(16+ YRS) |
|-----------------|--------------|--------------|--------------|--------------|----------------|
| <b>TRPHD</b>    | <b>19580</b> | <b>22863</b> | <b>17760</b> | <b>15799</b> | <b>76002</b>   |
| <b>BUFFALO</b>  | 11828        | 11910        | 8184         | 6863         | 38785          |
| <b>DAWSON</b>   | 4301         | 5723         | 4334         | 3696         | 18054          |
| <b>FRANKLIN</b> | 391          | 586          | 717          | 809          | 2503           |
| <b>GOSPER</b>   | 232          | 418          | 532          | 526          | 1708           |
| <b>HARLAN</b>   | 459          | 649          | 735          | 845          | 2688           |
| <b>KEARNEY</b>  | 985          | 1508         | 1343         | 1239         | 5075           |
| <b>PHELPS</b>   | 1384         | 2069         | 1915         | 1821         | 7189           |