



## **COVID-19 Vaccination Report – Two Rivers Health District : Dec 15 – Apr 20**

The three graphs depict the current status of COVID-19 vaccination in Two Rivers Public Health District (TRPHD) as of March 16, 2021. This includes residents of Buffalo, Dawson, Franklin, Gosper, Harlan, Kearney & Phelps counties (97,132). Of these, 76002 persons are eligible for the vaccine (aged 16 years or more)<sup>1</sup>

- Graphs 1 & 2 show relative number of **residents of each county** who have received one or two shots of the vaccine.
  - **Graph 1** shows the number of **eligible persons (16 + years)** per county, and orders the counties by decreasing percentage of persons who received one or two doses of the vaccine.
  - **Graph 2** shows the number of persons **aged 40-64 years** in the district, and orders each county by decreasing percentage of persons who received one dose and those fully vaccinated.
- **Graphs 3-5** show the proportion of cumulative (total) number of people vaccinated in Two Rivers Health District by county. Fully vaccinated persons are described by age group (16-29, 30-49, 50-64, 65+)
- **Graph 3** describes Buffalo and Dawson counties, **graph 4** describes Franklin, Gosper and Harlan counties, and **graph 5** describes Kearney and Phelps counties.

### **Key Takeaways**

1. *As of April 19, 2021, 36.6% of TRPHD's eligible population has been fully vaccinated. This is the second highest proportion of fully vaccinated residents in the State, after Lincoln-Lancaster health department.*
2. *Over 80% of residents aged 65 years or more in TRPHD have been fully vaccinated.*
3. *There exists wide variation in the proportion of fully vaccinated residents by age group in the seven counties of Two Rivers Health Department.*
4. *Although 84% of residents aged 65+ years of Buffalo county were fully vaccinated by April 19<sup>th</sup> while only 11% of those aged 16-29 years were fully vaccinated. This range in vaccination rates is seen across all counties in health departments. In general, older residents are more likely to be vaccinated as compared to younger residents.*
5. *Two Rivers Health Department has scheduled mass vaccination clinics at multiple sites across the seven counties to distribute vaccines and to focus on areas of potential shortfall. Those eligible for the vaccine are advised to contact their physician or register at Two Rivers Health Department ([www.trphd.org](http://www.trphd.org)).*

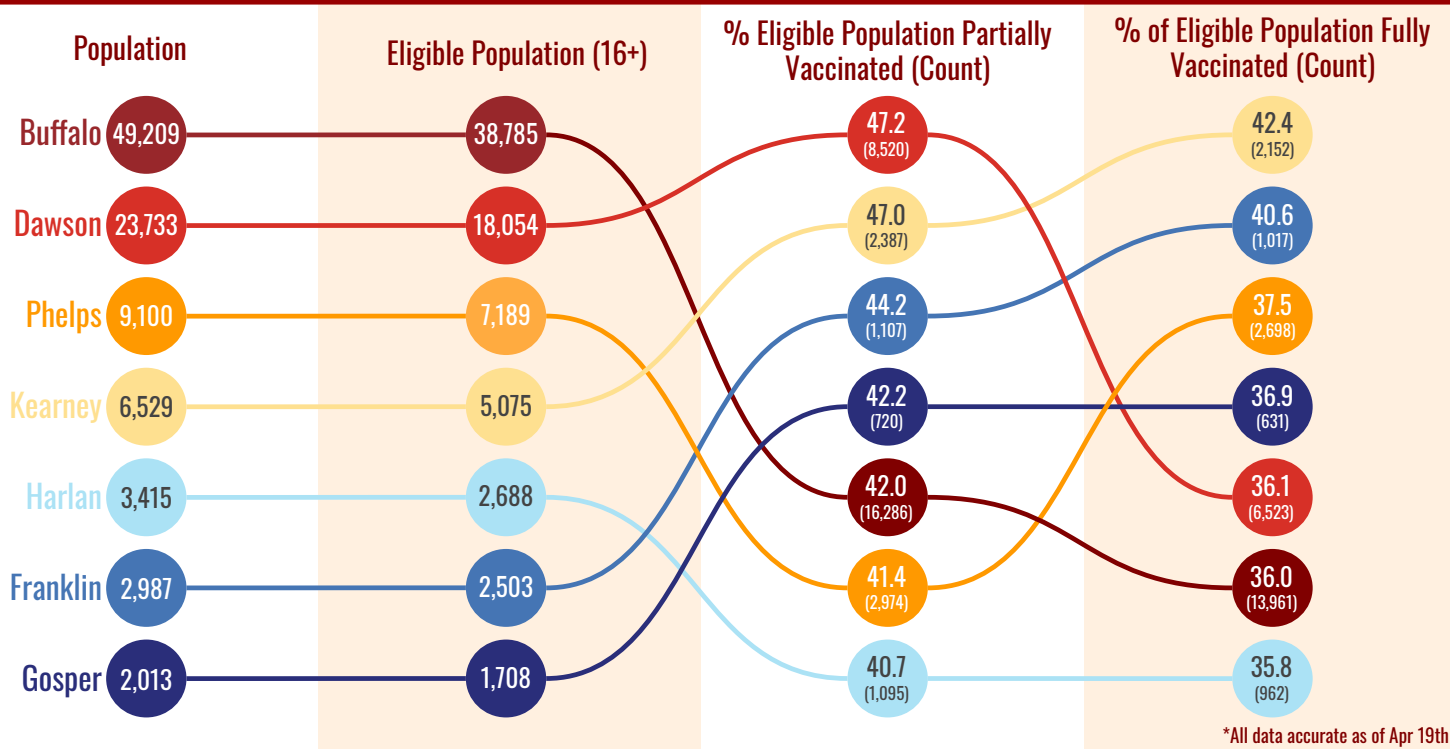
---

<sup>1</sup> For details on eligible persons by county, see appendix 1



- Vaccine formulations by Pfizer and Moderna (2 doses) and Johnson & Johnson (single dose) are calculated accordingly
- Each county is depicted by a colored circle, and the relative position of each corresponds to the proportion vaccinated. Actual numbers (count) are included in parenthesis.
- Data described from Dec 15, 2020 - April 19, 2021. All residents of the seven counties **over 16** years are included.
- Overall, 41.3% of the eligible population in Two Rivers Health District is now fully vaccinated - the second highest in the state.

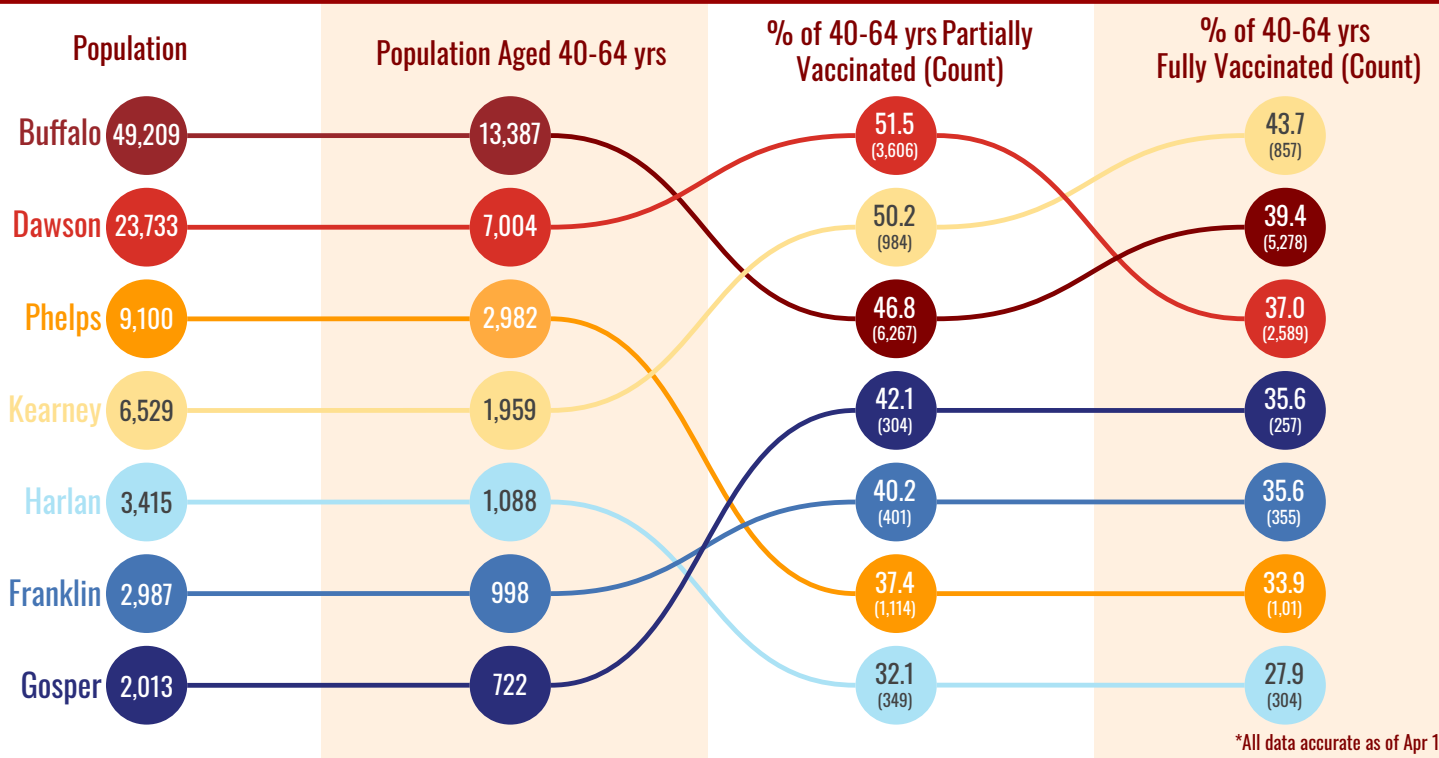
## Vaccinations of Eligible Population in TRPHD





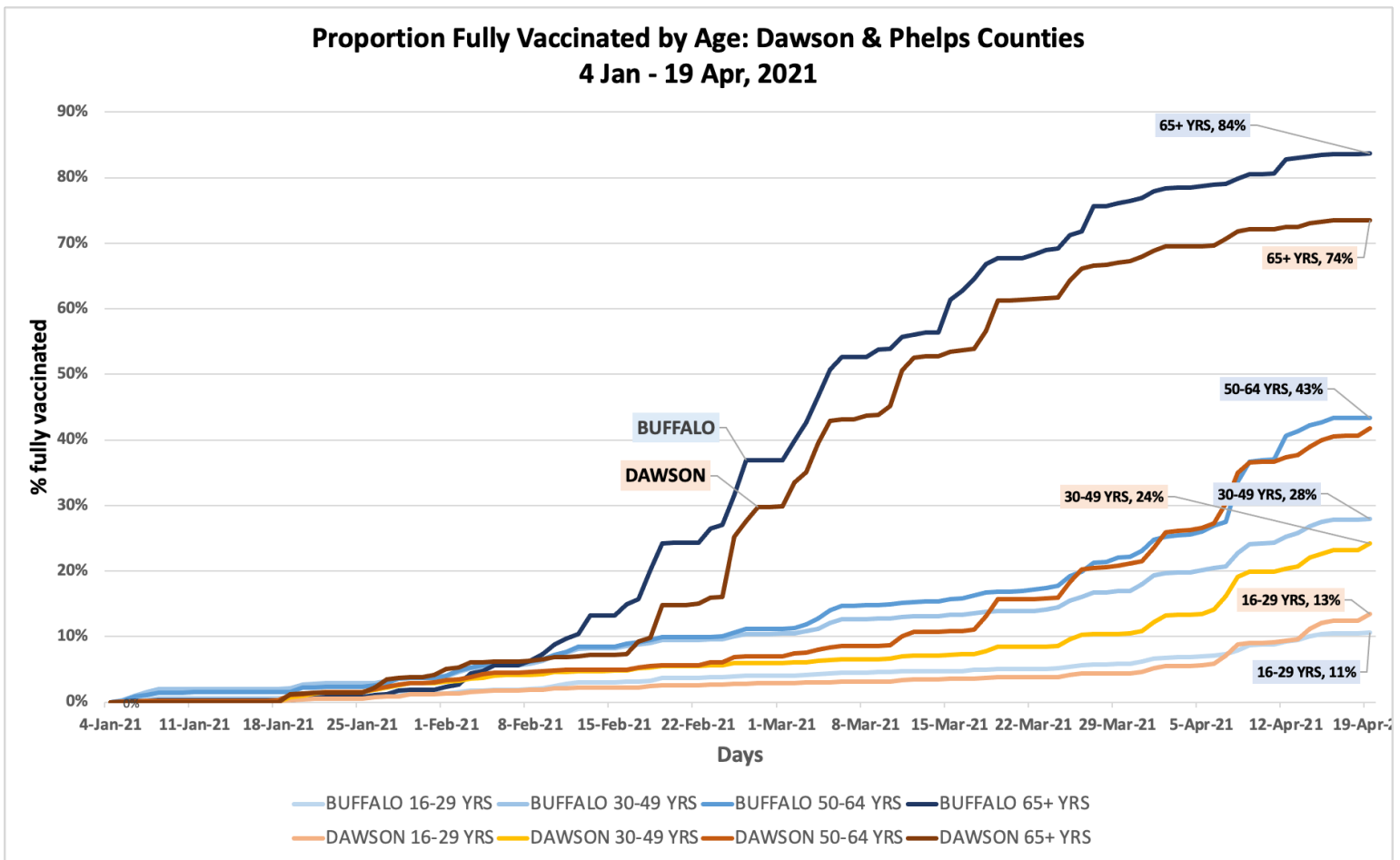
- Vaccine formulations by Pfizer and Moderna (2 doses) and Johnson & Johnson (single dose) are calculated accordingly
- Each county is depicted by a colored circle, and the relative position of each corresponds to the proportion vaccinated. Actual numbers (count) are included in parenthesis.
- Data is described from Dec 15, 2020 - April 19, 2021. All residents of the seven counties aged 40-64 years are included.

## Vaccinations of 40-64 yrs in TRPHD



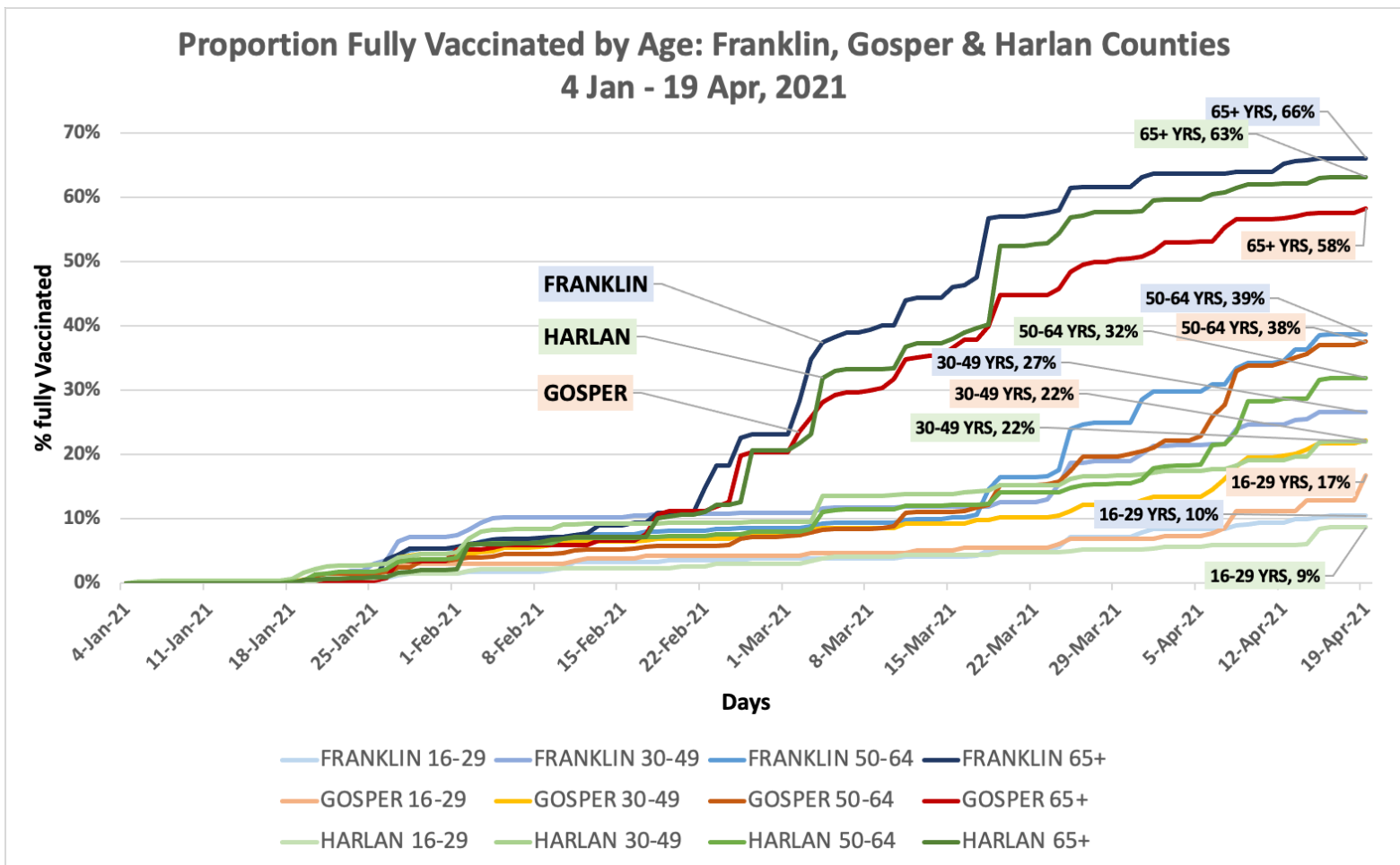


- The graph describes **all fully vaccinated residents** in Buffalo and Dawson counties from January 4, 2021 – April 19, 2021. The line describes the **total (cumulative) persons vaccinated** in each county, expressed as a percentage of the total population of the county.
- The first person recorded as ‘fully vaccinated’ was on January 4, 2021. The line shows the total number of persons vaccinated in the county on that date, each day’s new additions are represented by the slope of the graph.
- In general, **Dawson** county is represented by the **orange** line, and **Buffalo** by the **blue** line (see legend)
- The label shows the proportion of persons fully vaccinated in that age group as of April 19<sup>th</sup>, 2021.



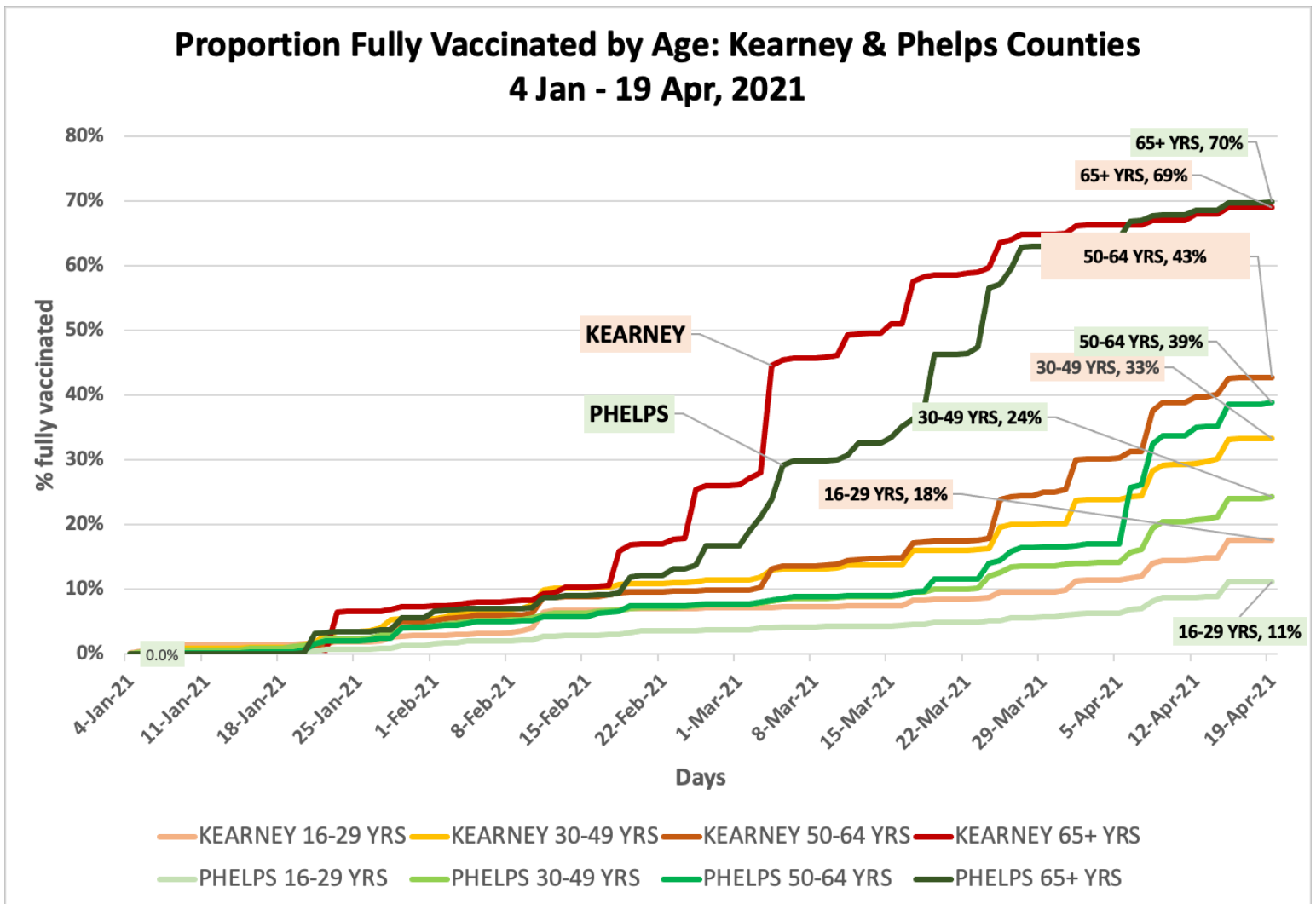


- The graph describes **all fully vaccinated residents** in Buffalo and Dawson counties from January 4, 2021 - April 19, 2021. The line describes the **total (cumulative) persons vaccinated** in each county, expressed as a percentage of the total population of the county.
- The first person recorded as 'fully vaccinated' was on January 4, 2021. The line shows the total number of persons vaccinated in the county on that date, each day's new additions are represented by the slope of the graph.
- In general, **Gosper** county is represented by the **orange** line, **Franklin** by the **blue** line, and **Harlan** by the **green** line (see legend)
- The label shows the proportion of persons fully vaccinated in that age group as of April 19<sup>th</sup>, 2021.





- The graph describes **all fully vaccinated residents** in Buffalo and Dawson counties from January 4, 2021 – April 19, 2021. The line describes the **total (cumulative) persons vaccinated** in each county, expressed as a percentage of the total population of the county.
- The first person recorded as 'fully vaccinated' was on January 4, 2021. The line shows the total number of persons vaccinated in the county on that date, each day's new additions are represented by the slope of the graph.
- In general, **Kearney** county is represented by the **orange** line, and **Phelps** by the **green** line (see legend)
- The label shows the proportion of persons fully vaccinated in that age group as of April 19<sup>th</sup>, 2021.





## APPENDIX 1

### Background

The Two Rivers Public Health Department (TRPHD) covers 7 counties in central Nebraska, reaching 97,132 people who live and work in the health district spread across roughly 4663 square miles. Over three quarters of residents live in Buffalo and Dawson county, a tenth live in Phelps county, and the remaining 15% is spread somewhat comparably among the four counties of Kearney, Harlan, Franklin and Gosper in decreasing order of population. The largest cities are Holdrege (pop. 5408), Lexington (pop. 10115) and Kearney (pop. 33867) meaning that well over half the residents of TRPHD live in three cities, and over a third are in Kearney alone. The population of all 7 counties in TRPHD are shown below.

County	Population
Buffalo	49,659
Dawson	23,595
Franklin	2,979
Gosper	1,990
Harlan	3,380
Kearney	6,495
Phelps	9,034
<b>TRPHD total</b>	<b>97,132</b>
Nebraska state	1,934,408
United States	328,239,523

### Vaccine-eligible population

The total COVID-19 vaccine-eligible population of Two Rivers Health District is about 76,002. This includes all residents over the age of 16 years living in the seven counties that make up the district. The table below describes the eligible population in each of the seven counties divided by age category.

	16-29 YRS	30-49 YRS	50-64 YRS	65+ YRS	TOTAL(16+ YRS)
<b>TRPHD</b>	<b>19580</b>	<b>22863</b>	<b>17760</b>	<b>15799</b>	<b>76002</b>
<b>BUFFALO</b>	11828	11910	8184	6863	38785
<b>DAWSON</b>	4301	5723	4334	3696	18054
<b>FRANKLIN</b>	391	586	717	809	2503
<b>GOSPER</b>	232	418	532	526	1708
<b>HARLAN</b>	459	649	735	845	2688
<b>KEARNEY</b>	985	1508	1343	1239	5075
<b>PHELPS</b>	1384	2069	1915	1821	7189



## **Vaccines used in TRPHD**

In the first phase, COVID-19 vaccines have been approved for use in all persons over the age of 16 years. Currently, Pfizer and Moderna vaccine formulations are being offered in Two Rivers Health District. Use of the Johnson & Johnson (Janssen) vaccine formulation has been paused pending further scrutiny by the Food and Drug Administration (FDA).

The Nebraska Department of Health and Human Services paused use of the Johnson & Johnson (Janssen) COVID-19 vaccine after Centers for Disease Control and Prevention (CDC) and Food and Drug Administration (FDA) recommendations following reports of six women who have been hospitalized with severe blood clots after receiving the vaccine dose, including one woman in Douglas county. The women were aged between 18-48 years.

To date, over 6.8 million doses of Janssen vaccine have been administered in the United States, over 31,500 in Nebraska, and 1560 in Two Rivers Health District.

Symptoms in the 6 hospitalized individuals included headache, back pain, other unexplained pain. Symptoms typically began 6-13 days after vaccination, and hospital admission was within 15 days, on average. More than 55% of the Janssen vaccine was administered before 22nd of March in Two Rivers Health District.