



### **Weekly report Aug 19-Aug 25 2020**

Reporting tests done on patients residing in **Buffalo, Dawson, Phelps, Gosper, Harlan, Kearney and Franklin** counties

**Reporting period** : Aug 19 – Aug 25 2020 (1 week)  
& July 29 – Aug 25 2020 (4 weeks)

#### **Overall testing – previous week**

A total of 1169 persons were tested in the past week, of whom 103 were positive, and 1066 were negative. The results are displayed below.

	<b>Negative</b>	<b>Positive</b>	<b>Total</b>
<b>Number</b>	1066	103	1169
<b>Percentage</b>	91.2%	8.8%	100.0%

#### **Overall testing – previous month**

A total of 4803 persons were tested in the past 4 weeks, of whom 486 were positive, and 4317 were negative. The results are displayed below.

	<b>Negative</b>	<b>Positive</b>	<b>Total</b>
<b>Number</b>	4317	486	4803
<b>Percentage</b>	89.9%	10.1%	100.0%

The following table gives details of positive cases done by county, age categories and gender.

**Table 1: Details of total and positive tests – 1 week and 4 weeks**

	<b>19 Aug – 25 Aug (1 wk)</b>			<b>29 July – 25 Aug (4 wks)</b>		
	<b>Positive cases</b>	<b>Total persons tested</b>	<b>P. rate (%)</b>	<b>Positive cases</b>	<b>Total persons tested</b>	<b>P. rate (%)</b>
<b>County</b>						
Buffalo	74	608	12.2%	297	2,870	10.3%
Dawson	8	184	4.3%	70	803	8.7%
Franklin	0	19	0.0%	7	105	6.7%
Gosper	1	16	6.3%	8	58	13.8%
Harlan	1	18	5.6%	2	52	3.8%
Kearney	13	199	6.5%	75	501	15.0%
Phelps	4	120	3.3%	23	392	5.9%
Data missing/ not disclosed	2	5	40.0%	4	22	18.2%

701 4<sup>th</sup> Avenue, Suite 1  
Holdrege, NE 68949

3715 29<sup>th</sup> Avenue, Suite A2  
Kearney, NE 68845

888-669-7154  
trphd.org



<b>Total</b>	<b>103</b>	<b>1169</b>	<b>8.8%</b>	<b>486</b>	<b>4803</b>	<b>10.1%</b>
<b>Age (in yrs)</b>						
0-17	7	169	4.1%	26	488	5.3%
18-29	24	255	9.4%	129	1,114	11.6%
30-39	12	180	6.7%	66	710	9.3%
40-49	17	118	14.4%	63	549	11.5%
50-59	13	133	9.8%	69	583	11.8%
60-69	14	126	11.1%	63	553	11.4%
70-79	12	88	13.6%	49	385	12.7%
80-89	2	58	3.4%	16	275	5.8%
90+	2	42	4.8%	5	144	3.5%
<b>Total</b>	<b>103</b>	<b>1169</b>	<b>8.8%</b>	<b>486</b>	<b>4801</b>	<b>10.1%</b>
<b>Gender</b>						
Female	45	457	9.8%	208	1,759	11.8%
Male	51	384	13.3%	251	1,479	17.0%
Data missing/ not disclosed	7	328	2.1%	27	1,565	1.7%
<b>Total</b>	<b>103</b>	<b>1169</b>	<b>8.8%</b>	<b>486</b>	<b>4803</b>	<b>10.1%</b>

The following table gives proportion of total tests done by county and age category on July 29 - Aug 19 2020

**Table 2: Total tests in TRPHD – past week and past 4 weeks – proportions by county, age and gender**

	19 Aug – 25 Aug (1 wk)		29 July – 25 Aug (4 wks)	
	Total persons tested	Percentage of tests done by county/ age group/ gender (%)	Total persons tested	Percentage of tests done by county/ age group/ gender (%)
<b>County</b>				
Buffalo	608	52.0%	2,870	59.8%
Dawson	184	15.7%	803	16.7%
Franklin	19	1.6%	105	2.2%
Gosper	16	1.4%	58	1.2%
Harlan	18	1.5%	52	1.1%
Kearney	199	17.0%	501	10.4%
Phelps	120	10.3%	392	8.2%

701 4<sup>th</sup> Avenue, Suite 1  
Holdrege, NE 68949

3715 29<sup>th</sup> Avenue, Suite A2  
Kearney, NE 68845

888-669-7154  
trphd.org



Data missing/ not disclosed	5	0.4%	22	0.5%
<b>Total</b>	<b>1169</b>	<b>100.0%</b>	<b>4803</b>	<b>100.0%</b>
<b>Age (in yrs)</b>				
0-17	169	14.5%	488	10.2%
18-29	255	21.8%	1,114	23.2%
30-39	180	15.4%	710	14.8%
40-49	118	10.1%	549	11.4%
50-59	133	11.4%	583	12.1%
60-69	126	10.8%	553	11.5%
70-79	88	7.5%	385	8.0%
80-89	58	5.0%	275	5.7%
90+	42	3.6%	144	3.0%
<b>Total</b>	<b>1169</b>	<b>100.0%</b>	<b>4801</b>	<b>100.0%</b>
<b>Gender</b>				
Female	457	39.1%	1,759	36.6%
Male	384	32.8%	1,479	30.8%
Data missing/ not disclosed	328	28.1%	1,565	32.6%
<b>Total</b>	<b>1169</b>	<b>100.0%</b>	<b>4803</b>	<b>100.0%</b>
<b>Testing facility</b>				
Pvt clinic or hosp in Phe/Kea/Fra/Gos/Har	194	4.0%	56	4.8%
Pvt clinic or hosp in Buffalo Co	1,099	22.9%	336	28.7%
Pvt clinic or hosp in Dawson Co	562	11.7%	132	11.3%
Pvt clinic or hosp in outside TRPHD	327	6.8%	57	4.9%
TestNE	2,402	50.0%	529	45.3%
Other	219	4.6%	59	5.0%
<b>Total</b>	<b>4803</b>	<b>100.0%</b>	<b>1169</b>	<b>100.0%</b>

701 4<sup>th</sup> Avenue, Suite 1  
Holdrege, NE 68949

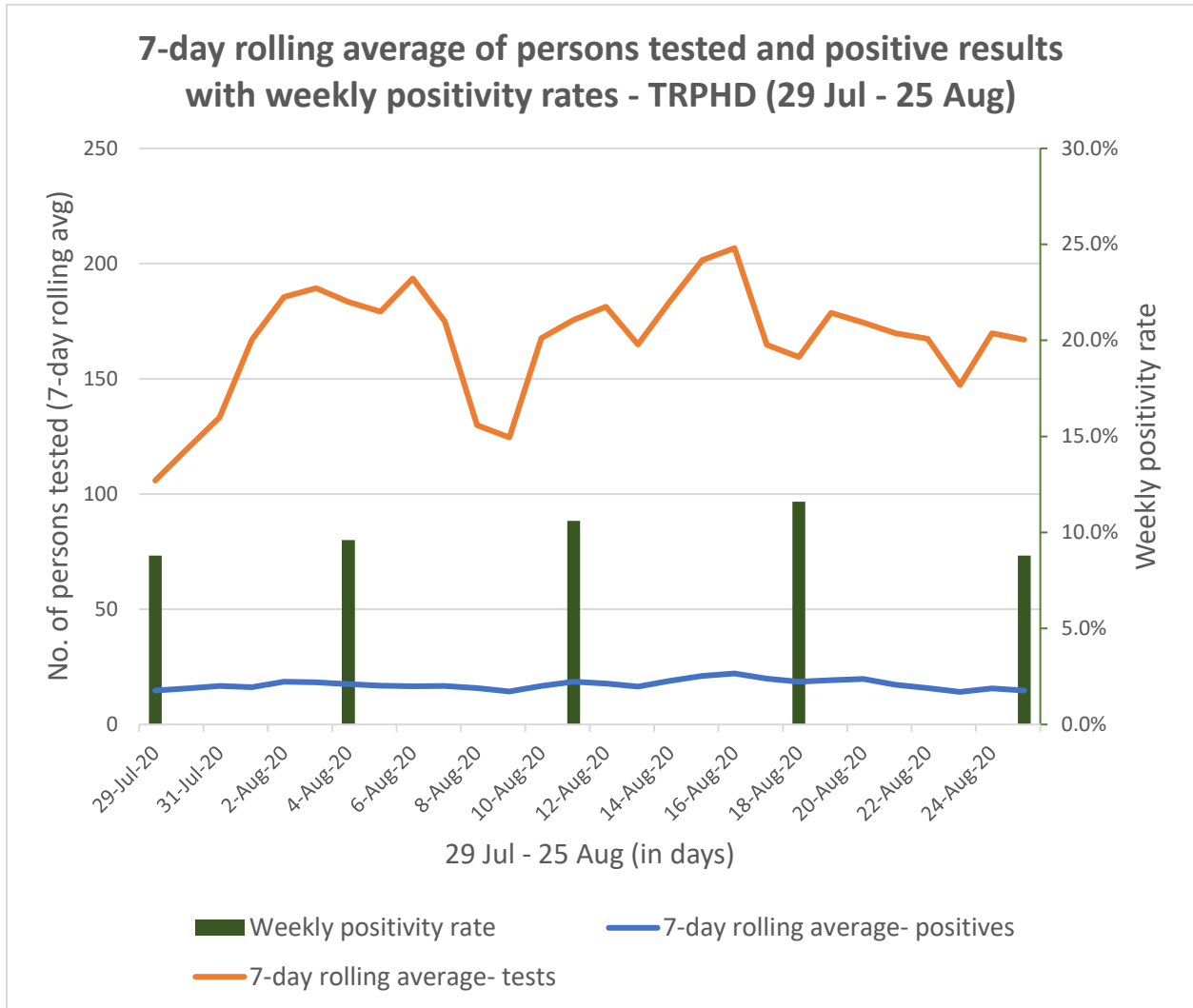
3715 29<sup>th</sup> Avenue, Suite A2  
Kearney, NE 68845

888-669-7154  
trphd.org

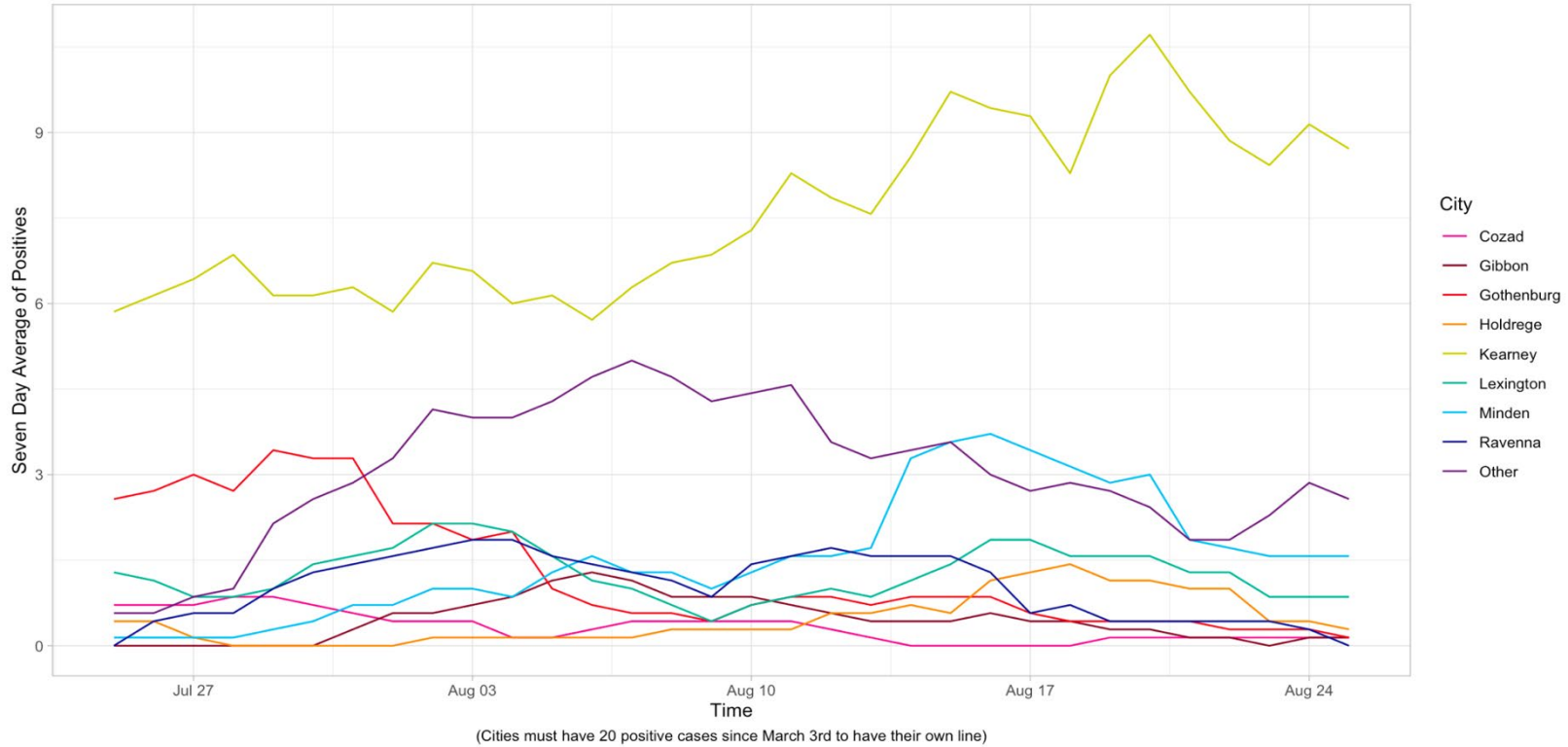


### **Weekly summary**

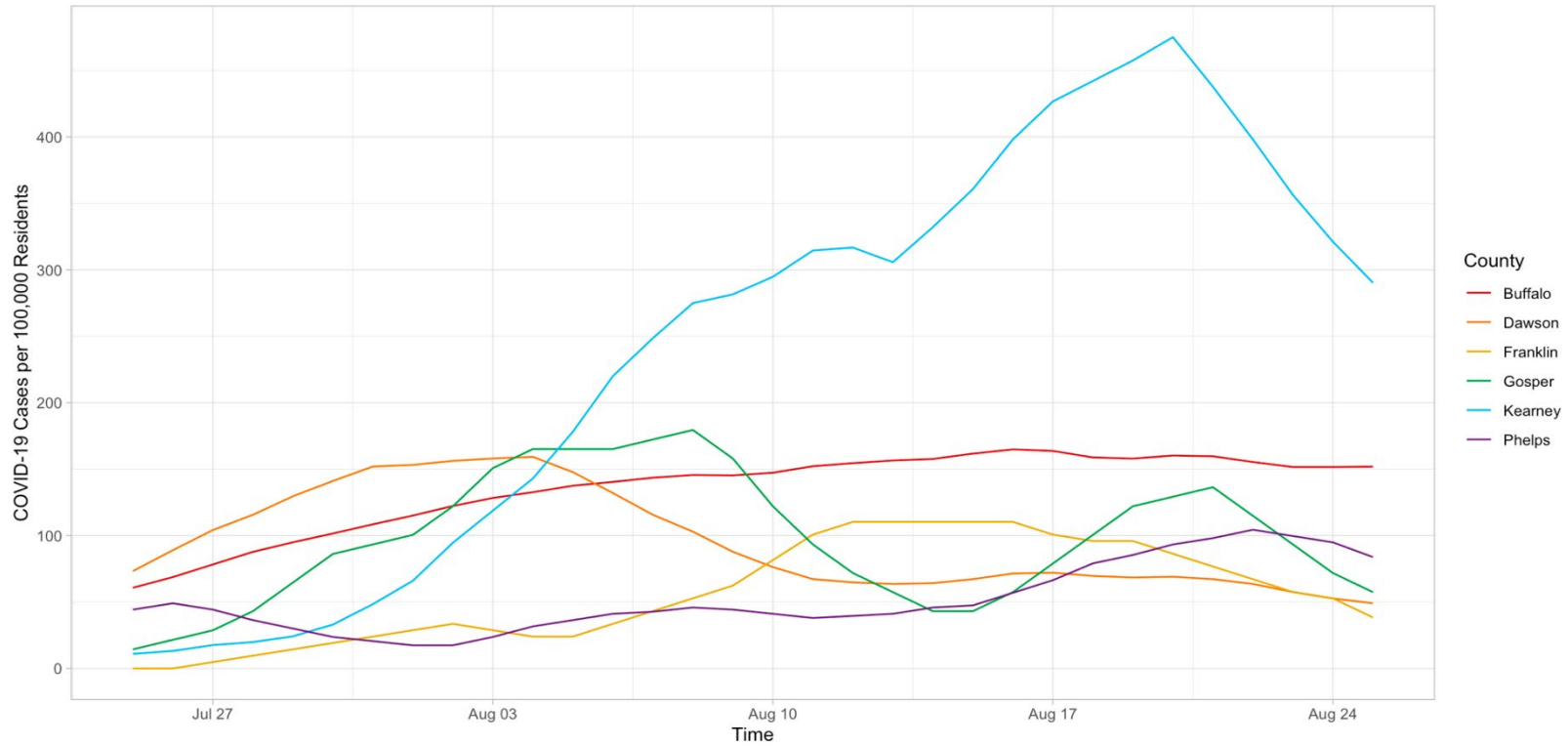
- The numbers above depict the total persons tested over the past week and the past 4 weeks. To date, over 17000 (17038) persons have been tested across all 7 counties, and 1767 persons have been detected positive (positivity rate 10.37%)
- Almost 80% of tests over the past week were administered to people living in Buffalo, Phelps and Kearney counties. The proportion is similar, but slightly lower for the past month. To date, over 50% of all COVID tests have been conducted on people living in Buffalo county, about 28% in Dawson county, and the rest (20%) in Franklin, Gosper, Harlan, Kearney and Phelps counties.
- Positivity rate for the past week for Buffalo county is 12.2%, an increase over the previous week. This rise is largely driven by positive results among 18-29, 40-49 and 70-79 year olds in Kearney city. 18-23 year olds in Kearney city (pos rt 14%) show lower numbers of positives compared to previous weeks, but still higher than both county and district. Over 26% positivity (13/49) among 40-49 year olds and over 21% (8/38) among 70-79 year olds in the past week is concerning. These ages might correspond to that of parents and grandparents of high school or college students.
- 18-29 year olds continue to remain the most tested age cohort over the past week (as in the past month), accounting for over a fifth of tests (split roughly equal between 18-23 and 24-29 year olds)
- Over 400 tests were conducted in Cozad and Gothenburg in the past month, a little under a sixth in the past week. Both cities showed dramatically lowered positivity rates, 50% and 75% reduction respectively in the past week compared to the previous three weeks.
- Smaller towns in Buffalo and Kearney counties like Gibbon, Axtell and Ravenna have seen a reduction in positivity in the past week compared to the previous month. However, Elm Creek (pos rt 18%) and Kearney city (pos rt 12%) are a cause for concern.



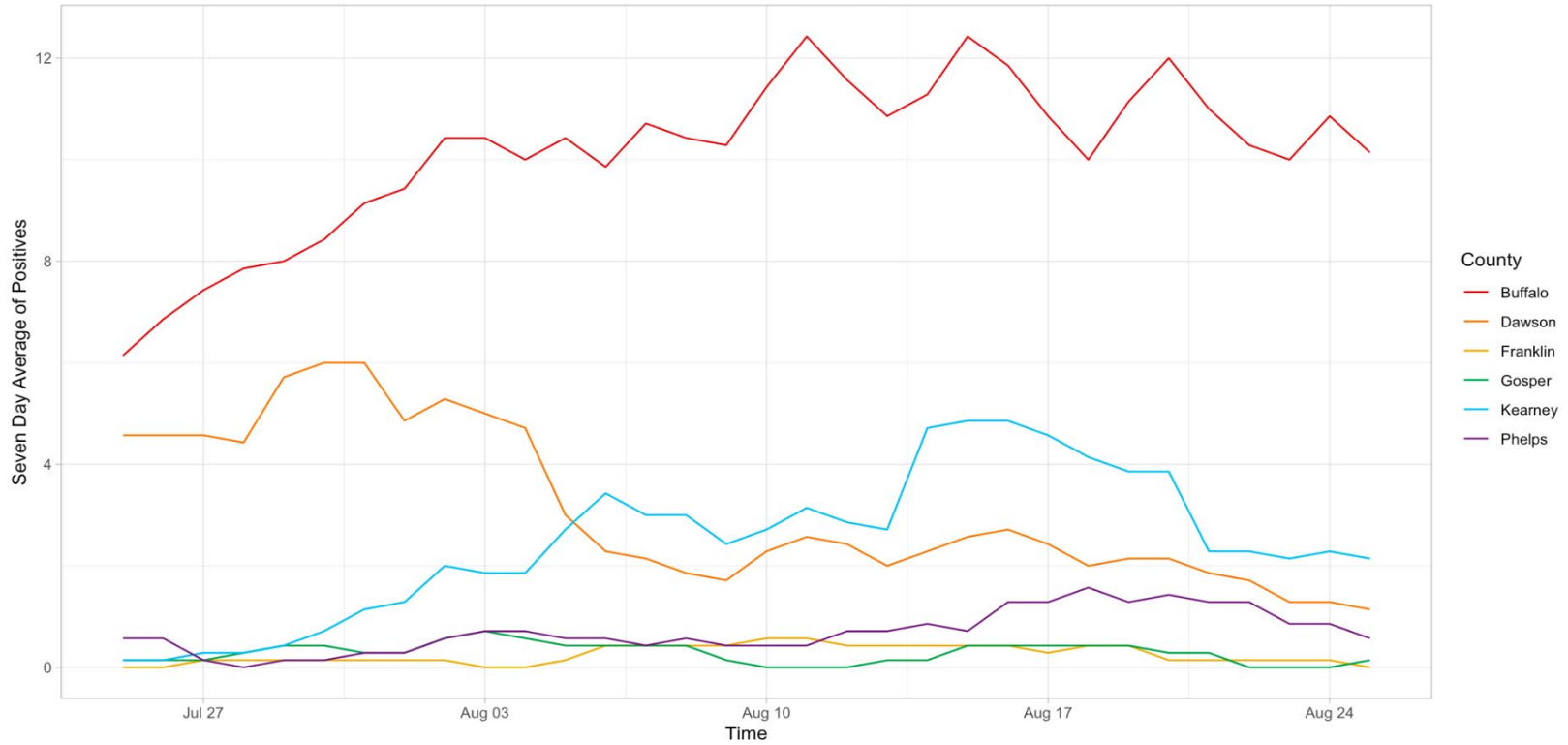
**7 Day Rolling Average of COVID-19 Cases  
in Two Rivers by City**



**7 Day Rolling Sum of COVID-19 Cases  
Per 100,000 Resident in Two Rivers by County**

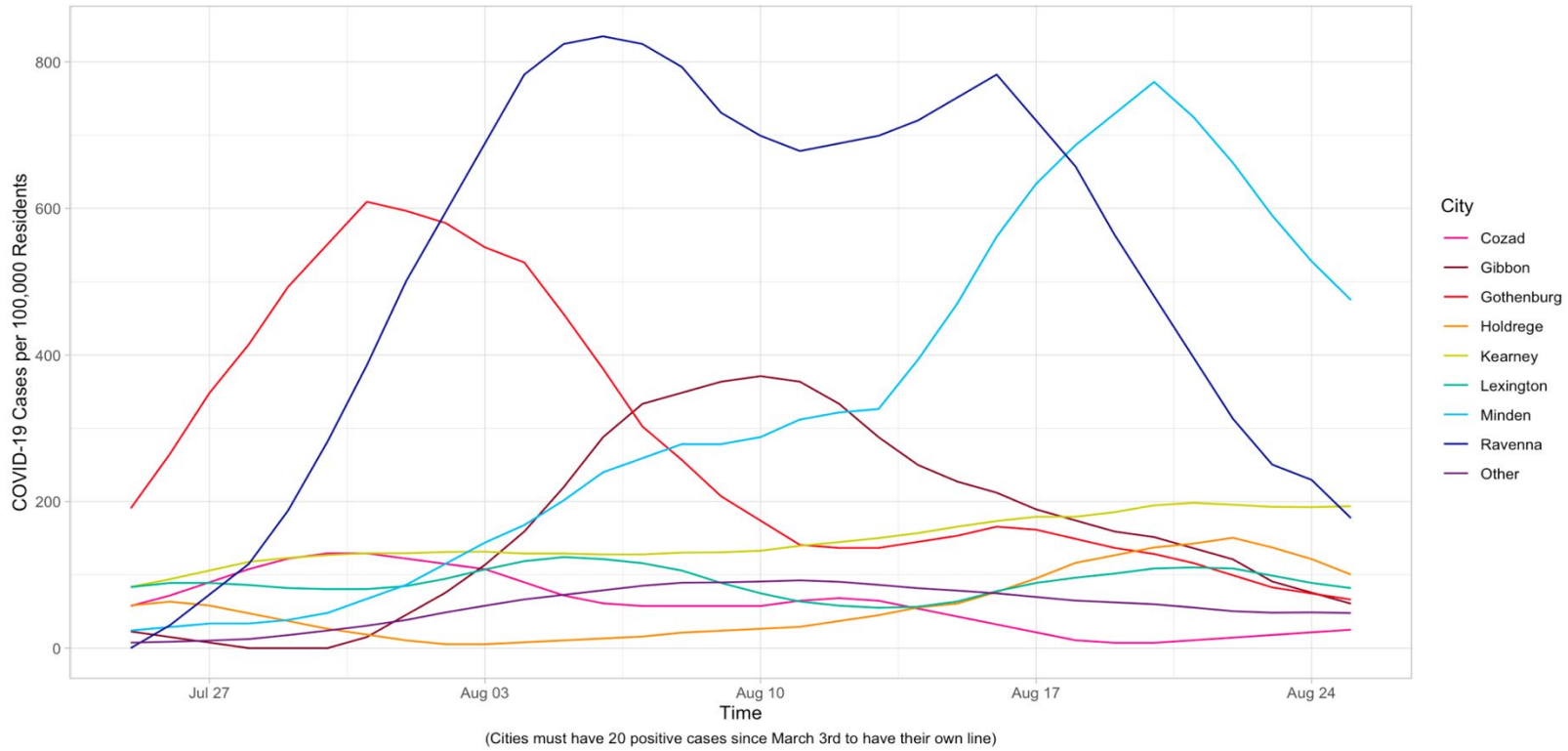


**7 Day Rolling Average of COVID-19 Cases  
in Two Rivers by County**





**7 Day Rolling Sum of COVID-19 Cases  
Per 100,000 Resident in Two Rivers by City**



**7 Day Rolling Average of COVID-19 Cases in Two Rivers by Age**

