



COVID-19 Vaccination Report – Two Rivers Health District : Dec 15, 2020 – Jun 28, 2021

The graphs depict the current status of COVID-19 vaccination in Two Rivers Public Health District (TRPHD) as of Jun 28, 2021. This includes residents of **Buffalo, Dawson, Franklin, Gosper, Harlan, Kearney & Phelps** counties (97,132). Of these, 81,216 persons are currently eligible for the vaccine (aged 12 years or more)¹. Currently, we are reporting vaccinated numbers by total population in TRPHD, to have a better sense of the overall vaccine coverage in the community.

- Graphs 1 & 2 show relative number of **residents of each county** who have received one or two shots of the vaccine from **Dec 15, 2020 – Jun 28, 2021**.
 - **Graph 1** shows the number of TRPHD residents (all ages) per county, and orders counties by decreasing percentage of persons who received one or two doses of the vaccine.
 - **Graphs 2-6** shows the number of persons **aged 0-17, 18-29, 30-49, 50-64 & 65+ years** in TRPHD, and orders each county by decreasing percentage of persons who received one dose and those fully vaccinated.
- **Graph 7** describes the doses of COVID vaccine availed by residents of **each county** from December 15, 2020 to June 28, 2021. Also presented is the **daily average** (7-day rolling) of COVID vaccine doses received by residents during this time.

Key Takeaways

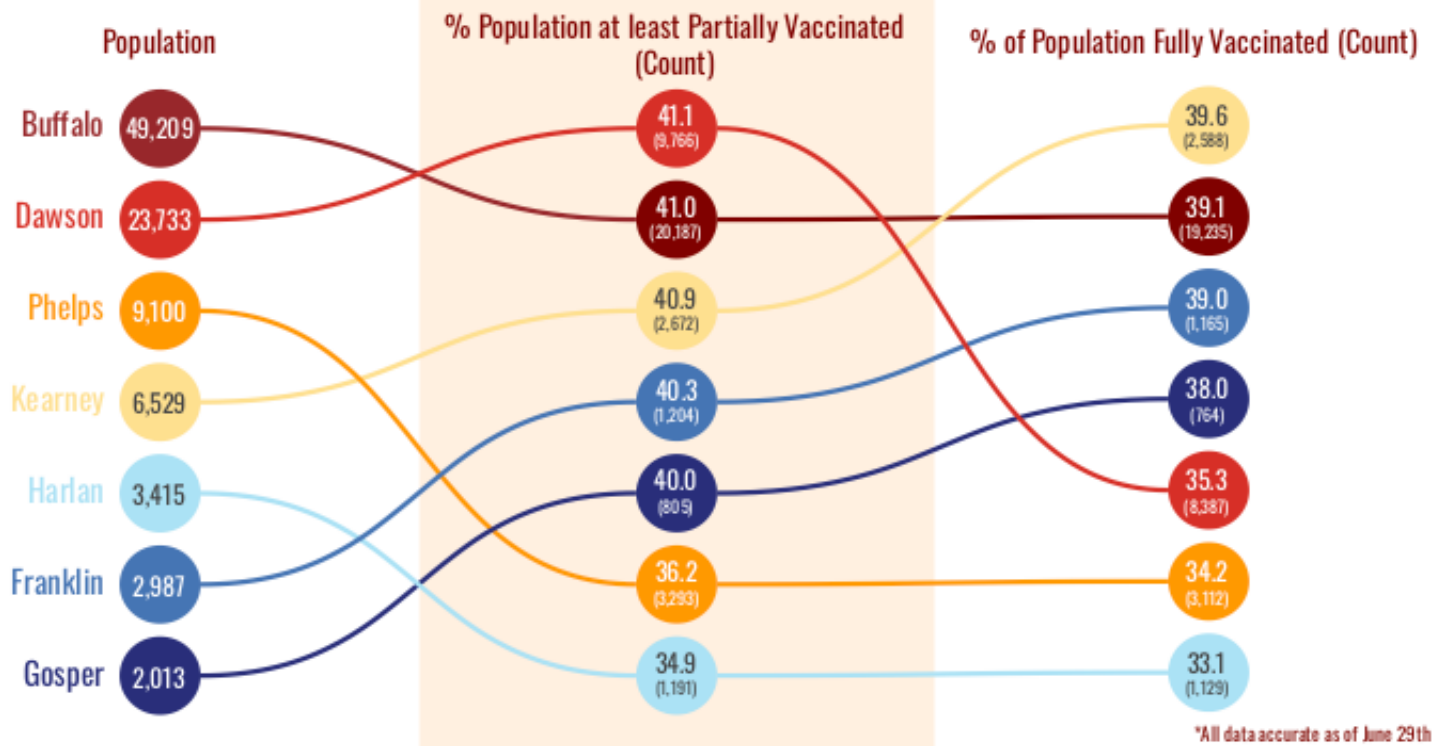
- 1. As of Jun 28, 2021, 37.4% of TRPHD's total population has been fully vaccinated. 44.7% of the eligible population (aged 12 years and over) is fully vaccinated.**
- 2. The daily average of vaccine shots availed by persons has remained between 80-120 doses per day since early June, as compared to between 700-820 doses per day, on average, in mid-April. This slowdown has occurred in spite of expanded vaccine availability as well as wide availability of first and second- dose vaccines.**
- 3. The number of persons receiving the single-dose Johnson & Johnson vaccine has risen slightly in recent weeks, as well as those receiving their first doses, as compared to the previous one month period.**
- 4. Some residents continue to postpone their second dose of vaccine in spite of the eligible period having lapsed. TRPHD strongly urges all residents to avail of the full vaccination schedule (1 or 2 doses as indicated) through the health department or their clinic service .**
- 5. Two Rivers Health Department has scheduled mobile vaccination clinics at multiple sites across the seven counties to distribute vaccines and to focus on areas of potential shortfall. Those eligible for the vaccine are advised to refer to the vaccination clinic schedule at www.trphd.org and book their appointments.**

¹ For details on eligible persons by county, see appendix 1



- Vaccine formulations by Pfizer and Moderna (2 doses) and Johnson & Johnson (single dose) are calculated accordingly
- Each county is depicted by a colored circle, and the relative position of each corresponds to the proportion vaccinated. Actual numbers (count) are included in parenthesis.
- Data described from Dec 15, 2020 – Jun 28, 2021. All residents of the seven counties years are included.
- Overall, 37.4% of the total population in Two Rivers Health District is now fully vaccinated.

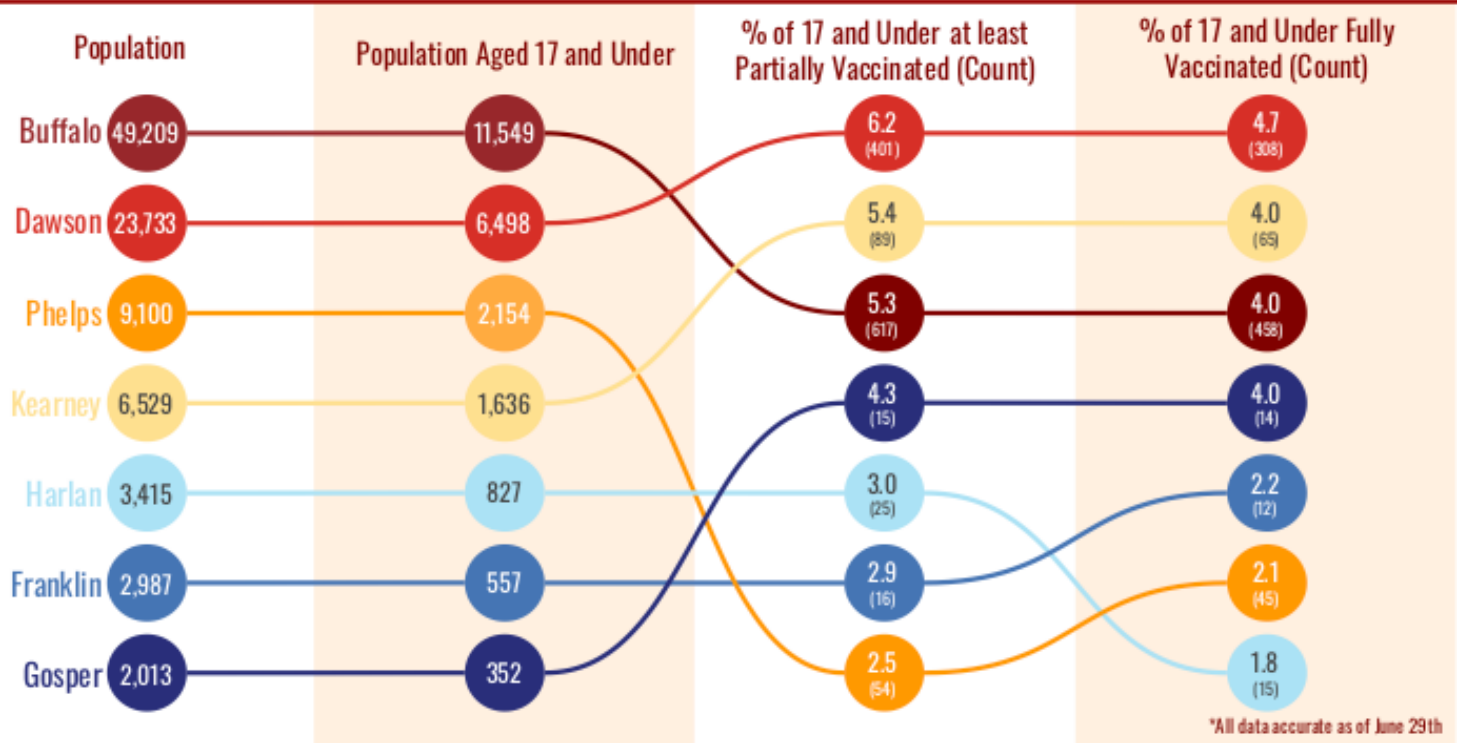
Vaccinations of Total Population in TRPHD





- Vaccine formulations by Pfizer and Moderna (2 doses) and Johnson & Johnson (single dose) are calculated accordingly
- Each county is depicted by a colored circle, and the relative position of each corresponds to the proportion vaccinated. Actual numbers (count) are included in parenthesis.
- Data is described from Dec 15, 2020 - Jun 28, 2021. All residents of the seven counties aged 0-17 years are included.
- Overall, 3.9% of those aged 0-17 years in Two Rivers Health District are now fully vaccinated.

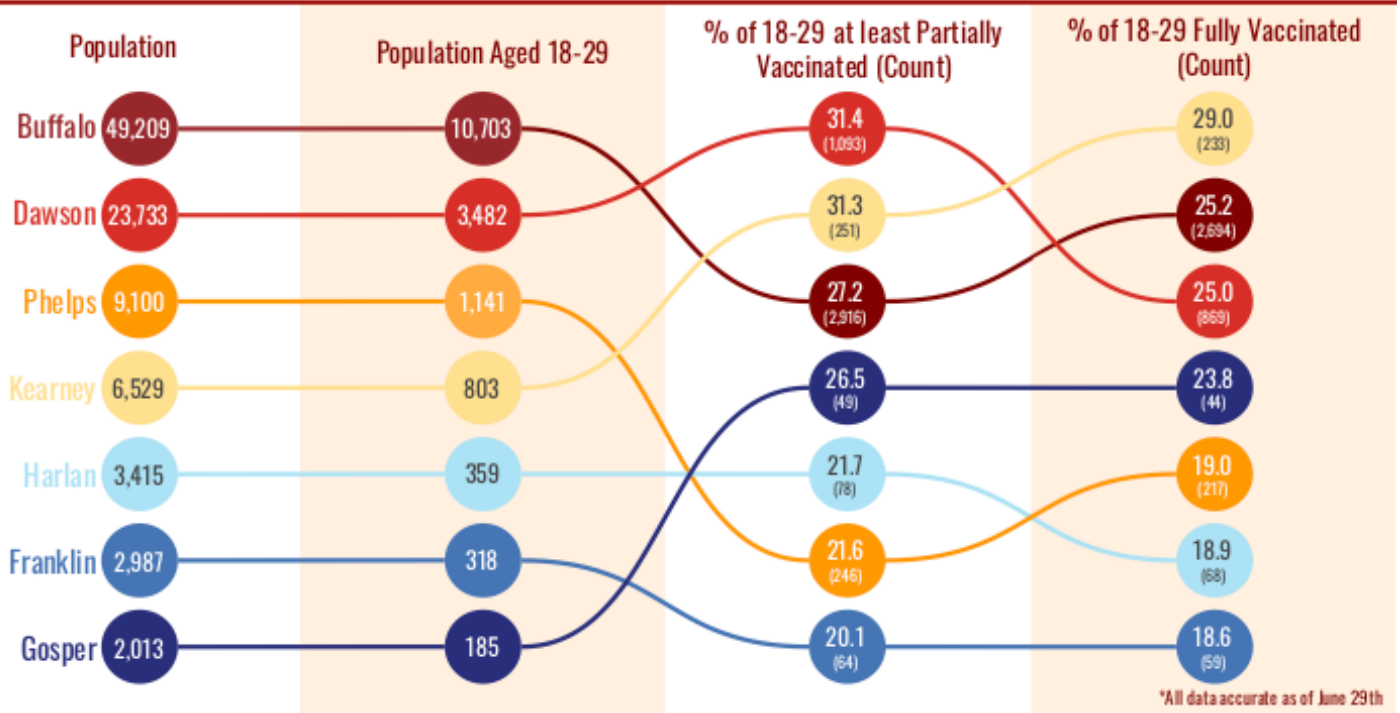
Vaccinations of 17 and Under in TRPHD





- Vaccine formulations by Pfizer and Moderna (2 doses) and Johnson & Johnson (single dose) are calculated accordingly
- Each county is depicted by a colored circle, and the relative position of each corresponds to the proportion vaccinated. Actual numbers (count) are included in parenthesis.
- Data is described from Dec 15, 2020 - Jun 28, 2021. All residents of the seven counties aged 18-29 years are included.
- Overall, 24.6% of those aged 18-29 years in Two Rivers Health District are now fully vaccinated.

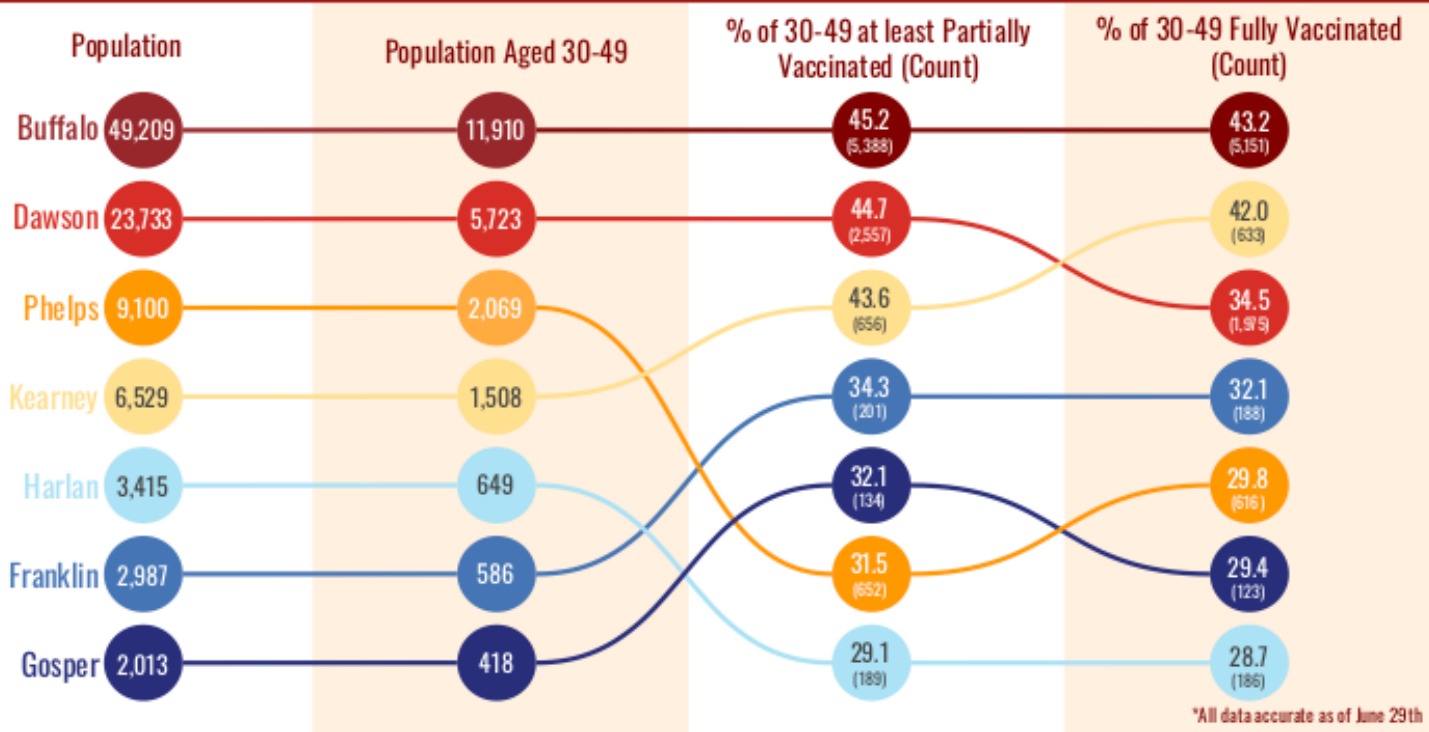
Vaccinations of 18-29 in TRPHD





- Vaccine formulations by Pfizer and Moderna (2 doses) and Johnson & Johnson (single dose) are calculated accordingly
- Each county is depicted by a colored circle, and the relative position of each corresponds to the proportion vaccinated. Actual numbers (count) are included in parenthesis.
- Data is described from Dec 15, 2020 - Jun 28, 2021. All residents of the seven counties aged 30-49 years are included.
- Overall, 38.8% of those aged 30-49 years in Two Rivers Health District are now fully vaccinated.

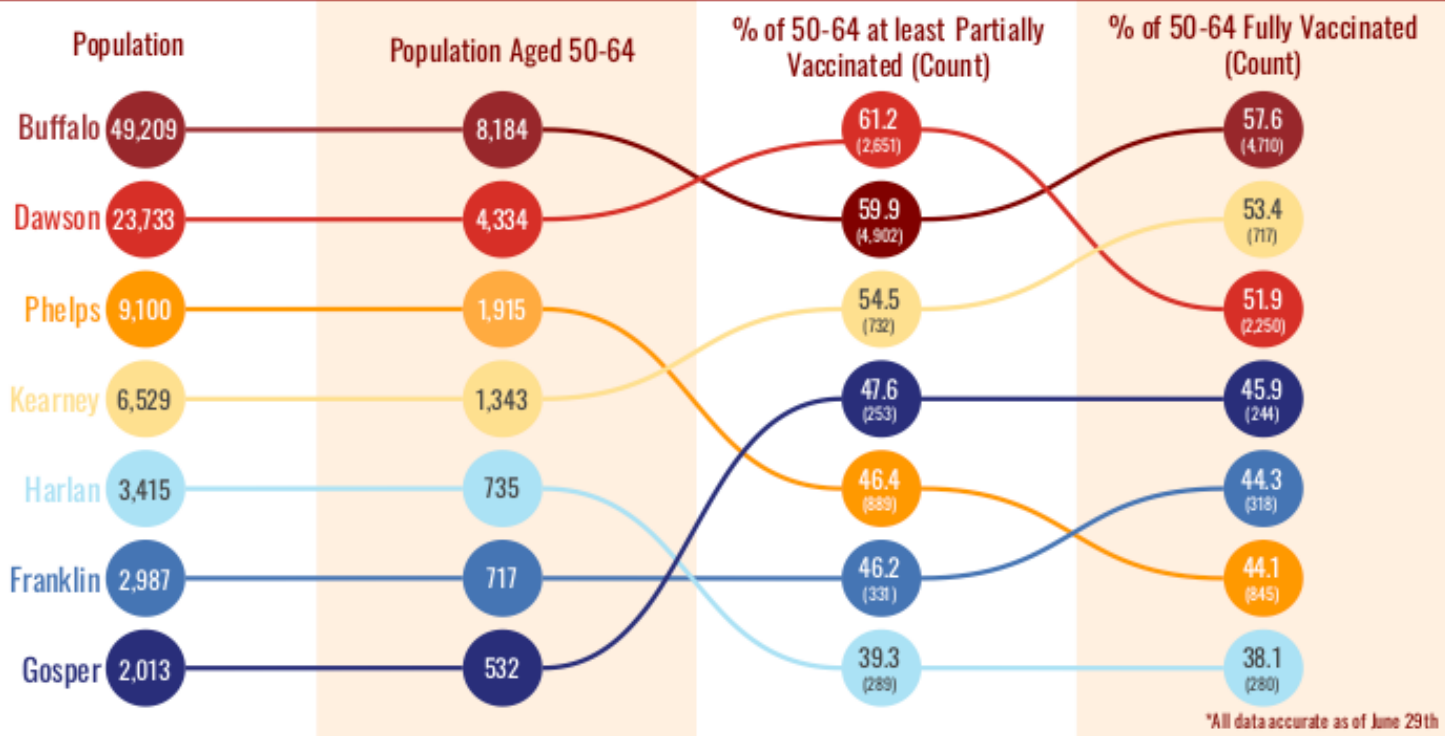
Vaccinations of 30-49 in TRPHD





- Vaccine formulations by Pfizer and Moderna (2 doses) and Johnson & Johnson (single dose) are calculated accordingly
- Each county is depicted by a colored circle, and the relative position of each corresponds to the proportion vaccinated. Actual numbers (count) are included in parenthesis.
- Data is described from Dec 15, 2020 - Jun 28, 2021. All residents of the seven counties aged 50-64 years are included.
- Overall, 52.7% of those aged 50-64 years in Two Rivers Health District are now fully vaccinated.

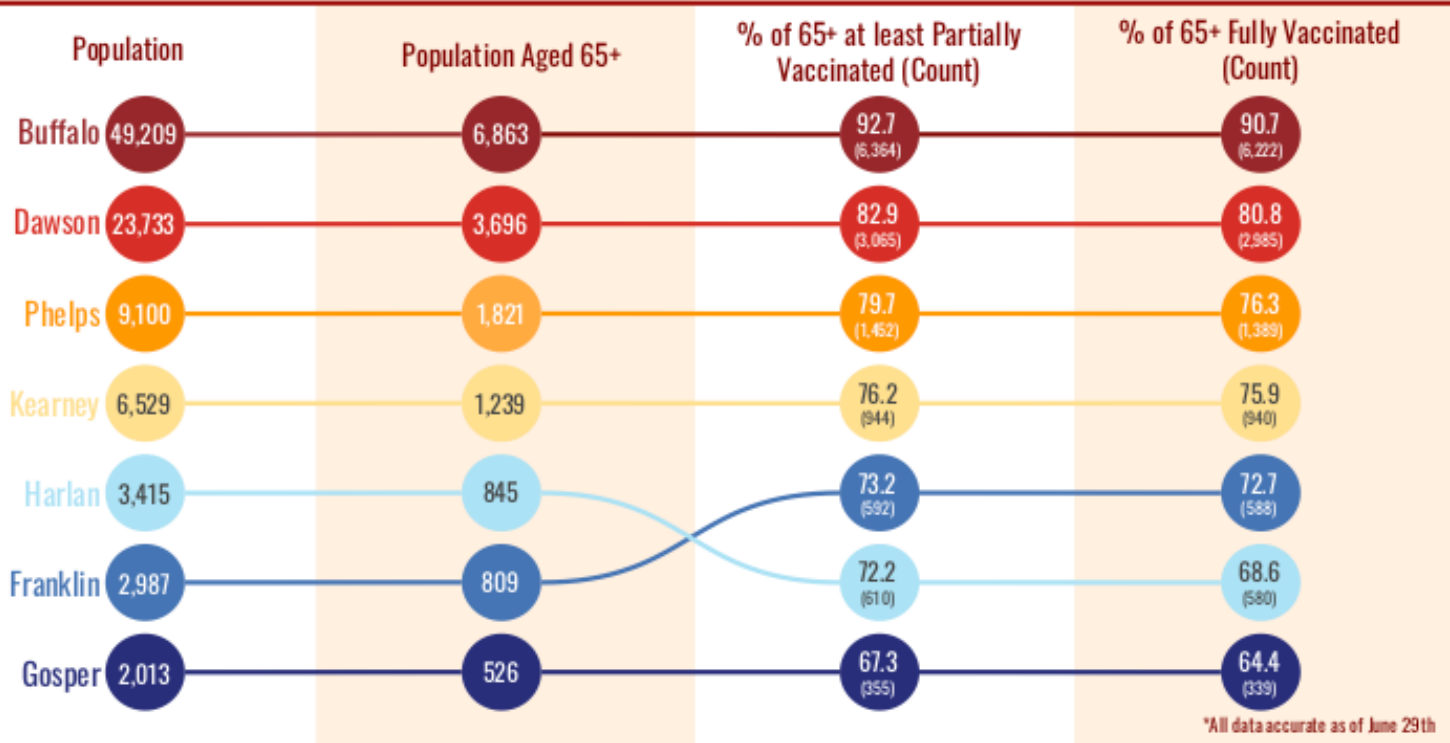
Vaccinations of 50-64 in TRPHD





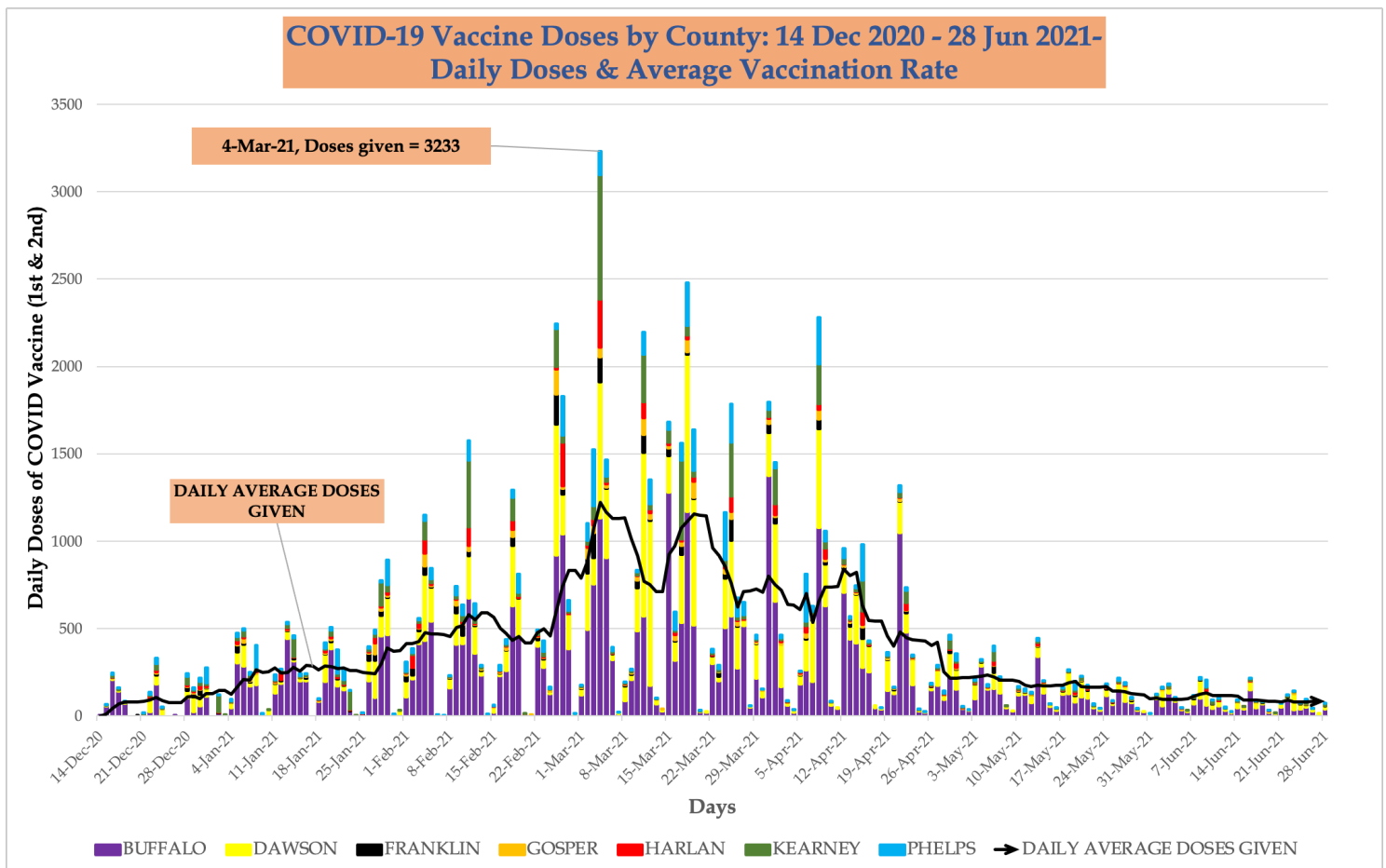
- Vaccine formulations by Pfizer and Moderna (2 doses) and Johnson & Johnson (single dose) are calculated accordingly
- Each county is depicted by a colored circle, and the relative position of each corresponds to the proportion vaccinated. Actual numbers (count) are included in parenthesis.
- Data is described from **Dec 15, 2020 - Jun 14, 2021**. All residents of the seven counties **aged 65 years and over** are included.
- **Overall, 82.1% of those aged 65+ years in Two Rivers Health District are now fully vaccinated.**

Vaccinations of 65+ in TRPHD





- The graph describes **the number of doses of COVID vaccine received by residents of Two Rivers Health District by county** from December 15, 2020 – June 28, 2021. Both first and second doses are shown. Also plotted is a line tracing the average daily doses received by residents of each of the 7 counties (**Buffalo, Dawson, Franklin, Gosper, Harlan, Kearney & Phelps**).²
- The height of the bar graph corresponds to all doses of COVID vaccine received by residents of that county on that day, and the running line describes the daily average of doses (vaccination rate).



² Average Daily Doses on a day = (Sum of all doses given in the past 6 days + doses given that day) / 7



APPENDIX 1

Background

The Two Rivers Public Health Department (TRPHD) covers 7 counties in central Nebraska, reaching 97,132 people who live and work in the health district spread across roughly 4663 square miles. Over three quarters of residents live in Buffalo and Dawson county, a tenth live in Phelps county, and the remaining 15% is spread somewhat comparably among the four counties of Kearney, Harlan, Franklin and Gosper in decreasing order of population. The largest cities are Holdrege (pop. 5408), Lexington (pop. 10115) and Kearney (pop. 33867) meaning that well over half the residents of TRPHD live in three cities, and over a third are in Kearney alone. The population of all 7 counties in TRPHD are shown below.

County	Population
Buffalo	49,659
Dawson	23,595
Franklin	2,979
Gosper	1,990
Harlan	3,380
Kearney	6,495
Phelps	9,034
TRPHD total	97,132
Nebraska state	1,934,408
United States	328,239,523

Vaccine-eligible population

The total COVID-19 vaccine-eligible population of Two Rivers Health District is currently about 81,216. This includes all residents over the age of 12 years living in the seven counties that make up the district. The table below describes the eligible population in each of the seven counties divided by age category.

	12-29 YRS	30-49 YRS	50-64 YRS	65+ YRS	TOTAL(12+ YRS)
TRPHD	24794	22863	17760	15799	81216
BUFFALO	14,314	11910	8184	6863	41,271
DAWSON	5,750	5723	4334	3696	19,503
FRANKLIN	515	586	717	809	2,627
GOSPER	333	418	532	526	1,809
HARLAN	625	649	735	845	2,854
KEARNEY	1,385	1508	1343	1239	5,475
PHELPS	1,872	2069	1915	1821	7,677