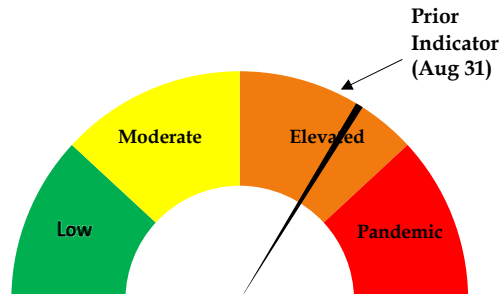




Risk Dial Sep 9, 2021



**Risk Dial for COVID-19
Two Rivers Public Health
Published Sep 9, 2021**

- 340 cases of COVID-19 were recorded in TRPHD between September 1 to September 7, over 2/3rd of those among persons less than 40 years of age. Cases have increased by about 30% per week since August 1.
- About 1200 positive cases were detected in Buffalo County in the past 6 months. Over 60% of those positive cases (747 positive results) were recorded since August 1. Around 390 COVID-positive cases were detected in Dawson County in the last month, of these 247 (60%) tested positive since August 1.
- COVID-related hospitalizations account for almost 20% of Medical/ Surgical bed occupancy; meanwhile ICU staffing capacity has fallen by 10% across the district in the last 2 months (see <https://www.trphd.org/> for details).
- Limited supply of COVID testing reagents across the nation has created additional barriers and delays in ensuring universal testing even as contact tracing activities have been scaled down across the state.
- As of Sep 6, 2021, 43% of TRPHD's total population and over half of the eligible population (12+years) has been fully vaccinated across the district. See weekly vaccination report at <https://www.trphd.org/covid-19/vaccination-reports.html> for details. In light of rising incidence rates connected to the newer delta variant, TRPHD strongly urges all unvaccinated vaccine-eligible residents to avail of the COVID vaccination through their healthcare provider, pharmacy or TRPHD. For schedule of vaccination clinics, see www.trphd.org
- For these reasons, the risk dial is further raised within the 'elevated risk' section this week. The raised dial level reflects the continuing increase in cases and hospitalization rates, reduced testing availability, constrained contact tracing and the rising incidence among younger residents.



Weekly report Sep 1 - Sep 7, 2021

Overview

The weekly report will look at COVID-19 cases in TRPHD across different time periods, presenting graphs showing daily progress of cases and a weekly summary in conclusion

- The tables describe total tests conducted and positive cases across TRPHD from **Sep 1 - Sep 7** (1 week) and **Aug 10 - Sep 7** (4 weeks). We show the average daily number of new cases, overall test positivity rate and positivity rate for tests that are not conducted routinely (eg: tests in hospitals and clinics, and not in residential facilities¹)
- The first graphic describes **the vaccination coverage rate of TRPHD residents by county** between **December 15, 2020 - Sep 6, 2021**. All **adult** residents (18 years and over) are included to calculate the **proportion of adult population partially or fully vaccinated**.
- The second set of graphs look at the progress of the pandemic from **April 1, 2020 - Sep 7, 2021** across all counties.
 - We describe the **7-day rolling average** ² of positive cases across TRPHD since April, describing overall progress and cases by **age categories**
- The third set of graphs describe the **COVID test positivity rate** in TRPHD from **March 15, 2020 - September 7, 2021**. The graph is modified to show residential, non-residential and overall positivity rates separately. ³
- The fourth set of graphs describe the daily case average (7-day rolling) across towns and cities in three urban areas (**Kearney, Lexington, Holdrege**) (Jul 1, 2020- Aug 31, 2021) ⁴
 - The cities described are **Kearney, Elm Creek, Pleasanton, Amherst, Riverdale, Gibbon, Shelton and Axtell** (total 39,412 people), **Lexington, Overton, Elwood, Johnson Lake and Cozad** (total 15,700 people), **Holdrege, Loomis and Funk** (total 5967 people).
- The fifth set of graphs describe the daily cases (7-day rolling average) from **Aug 10 - Sep 7**.
 - Progress is described by age & city of residence.

To conclude, weekly COVID case counts have risen by roughly 30% every week since August 1. Residents under 40 years account for 2/3rds of all new cases in the past week, even as a nationwide shortage of lab supplies has dramatically curtailed access to testing. COVID-related hospitalizations account for 20% of all beds in TRPHD. 43% of the total population of TRPHD district and 53% of all adults are fully vaccinated. TRPHD has scheduled mobile vaccination clinics 5 days a week at 9 different sites across the district, the schedule for the clinics can be found at <https://www.trphd.org/covid-19/event-calendar.html>. Those eligible for the vaccine are advised to contact their physician or refer to the vaccination clinic schedule. In the meantime, unvaccinated residents are advised to follow strict preventive measures (social distancing, correct and consistent masking) at all times, especially in light of increased transmission of the delta variant.

¹ For information on residential facilities, please see appendix 3

² 7-day rolling average refers to the sum of the cases reported on that day and the preceding 6 days divided by 7.

This number is presented for each day to 'smooth out' the line for cases.

³ For information on "average positivity rate", please see appendix 2

⁴ For information on urban areas, please see appendix 5



Testing & Vaccination Overview

- As of Sep 7, 2021, over 50,000 residents of Two Rivers Health District were tested at least once for COVID-19. Over 150,000 tests have been conducted since March 1, 2020 and over 9000 persons have tested positive at least once and about 2,600 have tested COVID positive more than once.⁵ TRPHD has publicly notified 124 deaths due to COVID-19 across the district.
- As of Sep 6, 2021, 43% of TRPHD’s entire population has been fully vaccinated. ⁶ Details of vaccination rates by age in each of the seven counties in Two Rivers Health District is shown below. The legend for color codes used is displayed below. Percentages have been rounded off to the nearest whole number. Vaccines are currently available to all eligible residents aged 12 years and over.

	BUFFALO	DAWSON	FRANKLIN	GOSPER	HARLAN	KEARNEY	PHELPS	TRPHD
0-17 YRS	9%	10%	6%	7%	6%	10%	5%	9%
18-29 YRS	30%	34%	22%	32%	24%	36%	25%	31%
30-39 YRS	43%	40%	37%	26%	36%	38%	36%	41%
40-49 YRS	56%	49%	41%	42%	30%	60%	36%	51%
50-59 YRS	61%	53%	42%	44%	44%	51%	48%	55%
60-69 YRS	78%	75%	63%	69%	59%	72%	63%	73%
70-79 YRS	96%	87%	87%	55%	87%	80%	91%	90%
80+ YRS	88%	76%	77%	76%	58%	69%	73%	79%
ALL AGES	44%	42%	43%	42%	38%	44%	39%	43%

0% - 33%	Less than 1/3rd fully vaccinated
34% - 50%	1/3rd to 1/2 fully vaccinated
50%- 74%	1/2 to 3/4ths fully vaccinated
75% & higher	Over 3/4ths fully vaccinated

- How to read this table: (For eg.) : “55% of all TRPHD residents in their 50s are fully vaccinated, however there is variation between counties. While almost 61% of all 50 year olds in Buffalo are vaccinated, only 42% of 50 year olds in Harlan are vaccinated.”

⁵ Note: The differences between the numbers reported and totals displayed on www.trphd.org dashboards is due to testing in residential facilities and isolated rapid test results not reflected in the state’s public dashboards. Tests of persons missing date of birth are excluded from the analysis

⁶ For information on vaccine-eligible population in each of the counties, please see appendix 4



- The table below provides details of positive cases detected in 7 counties in TRPHD in the past week (**Sep 1 - Sep 7**) and past 4 weeks (**Aug 10 - Sep 7**).
- The daily average refers to the average daily new COVID cases calculated either **weekly** (7-day average) or **monthly** (28-day average).
- All-test positivity rate refers to the proportion of all tests conducted that are positive, including regular testing, antigen and PCR.
- Positivity rate (non-routine testing) refers to tests that are **not** conducted in residential and long-term living facilities. ⁷ These COVID tests are conducted mainly in hospitals, clinics and pharmacies. Details are provided below.

	Sep 1 - Sep 7 (1 week)			Aug 10 - Sep 7 (4 weeks)		
	Daily average (7-day avg)	Positivity Rate (All tests)	Positivity Rate (non-routine testing)	Daily average (28-day avg)	Positivity Rate (All tests)	Positivity Rate (non-routine testing)
County						
Buffalo	32.3	11.1%	18.0%	22.5	10.3%	17.1%
Dawson	8.9	7.8%	15.3%	7.8	10.2%	17.2%
Franklin	0.4	2.6%	15.8%	0.9	9.6%	28.6%
Gosper	1.1	6.0%	41.2%	0.6	7.8%	26.3%
Harlan	0.7	2.7%	30.0%	0.4	1.9%	18.4%
Kearney	2.0	7.7%	20.0%	1.8	6.4%	20.9%
Phelps	3.0	9.2%	13.0%	2.1	9.9%	15.0%
Missing/ did not disclose	0.1	11.1%	11.1%	0.1	9.1%	9.1%
Age (in yrs)						
0-17	13.6	16.8%	18.2%	7.5	14.3%	15.9%
18-29	11.6	11.3%	19.0%	7.9	9.9%	15.9%
30-39	6.9	10.4%	19.6%	5.8	12.4%	21.3%
40-49	6.7	11.4%	21.3%	4.7	12.0%	22.0%
50-59	5.3	11.1%	23.1%	4.1	10.0%	20.8%
60-69	2.3	5.5%	10.8%	3.2	9.8%	19.4%
70-79	1.3	3.8%	8.2%	1.7	6.8%	14.9%
80+ yrs	1.0	1.0%	4.2%	1.1	1.8%	5.6%
TRPHD	48.6	9.2%	17.3%	36.0	9.5%	17.4%

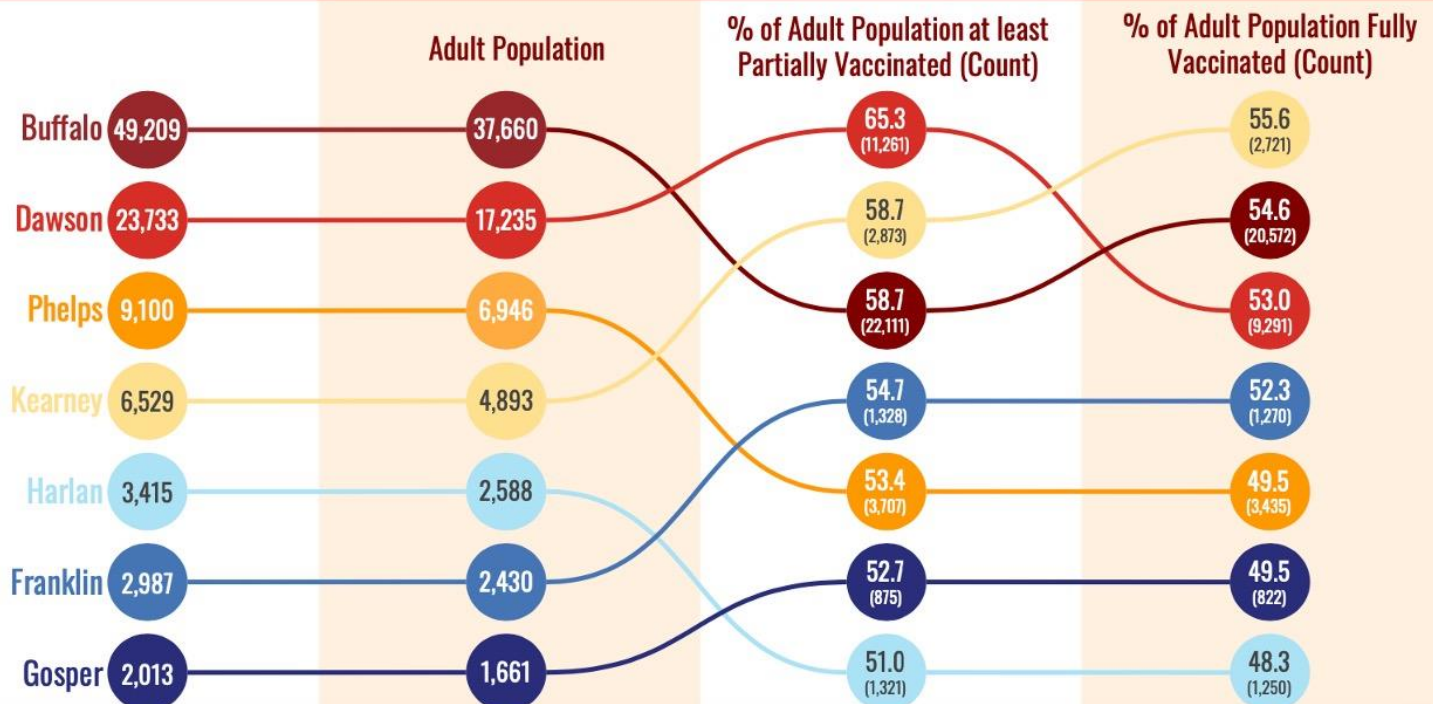
- How to read this table: (For eg.) : “Every day over the past month, 36 TRPHD residents tested positive for COVID-19 every day. One out of every five tests conducted in Kearney county outside long term care and residential facilities were positive; in the past week, Kearney county has recorded about two new COVID cases every day for the past month.”

⁷ For information on residential facilities, please see appendix 3
 516 W 11th Street, Suite 108
 Kearney, NE 68845



- The graph below describes **all adult TRPHD residents (18+ years) fully vaccinated** for COVID-19 between **December 15, 2020 – September 6, 2021**. All residents of the seven counties are included.
- Each county is depicted by a colored circle, and the relative position of each corresponds to the proportion vaccinated. Actual numbers (count) are included in parenthesis.
- **Overall, 43% of TRPHD’s total population and 53% of all adult residents (18 years and over) are fully vaccinated.**

Vaccinations of Adult Population (18+) in TRPHD



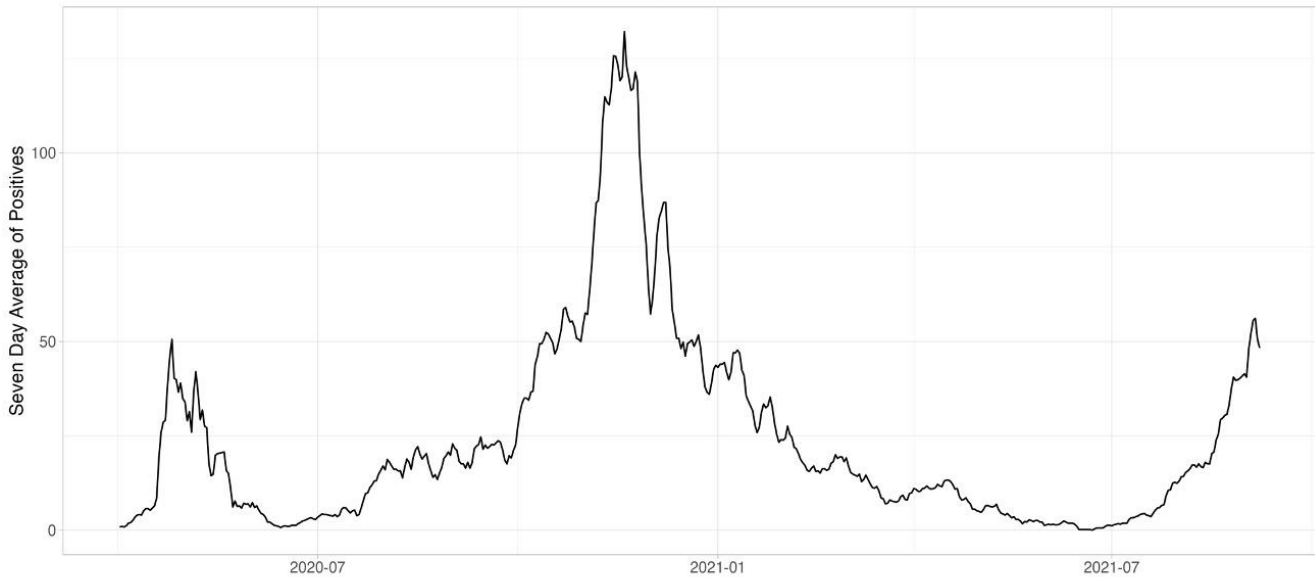
*All data accurate as of Sept 6th



- The graph below describes 7-day rolling average of COVID-19 across TRPHD from **April 1, 2020 - Sep 7, 2021.**
- The second graph describes 7-day rolling average of COVID-19 cases by age across TRPHD for the same time period. The height of the graph corresponds to total cases and the thickness of each colored band corresponds to each age group.

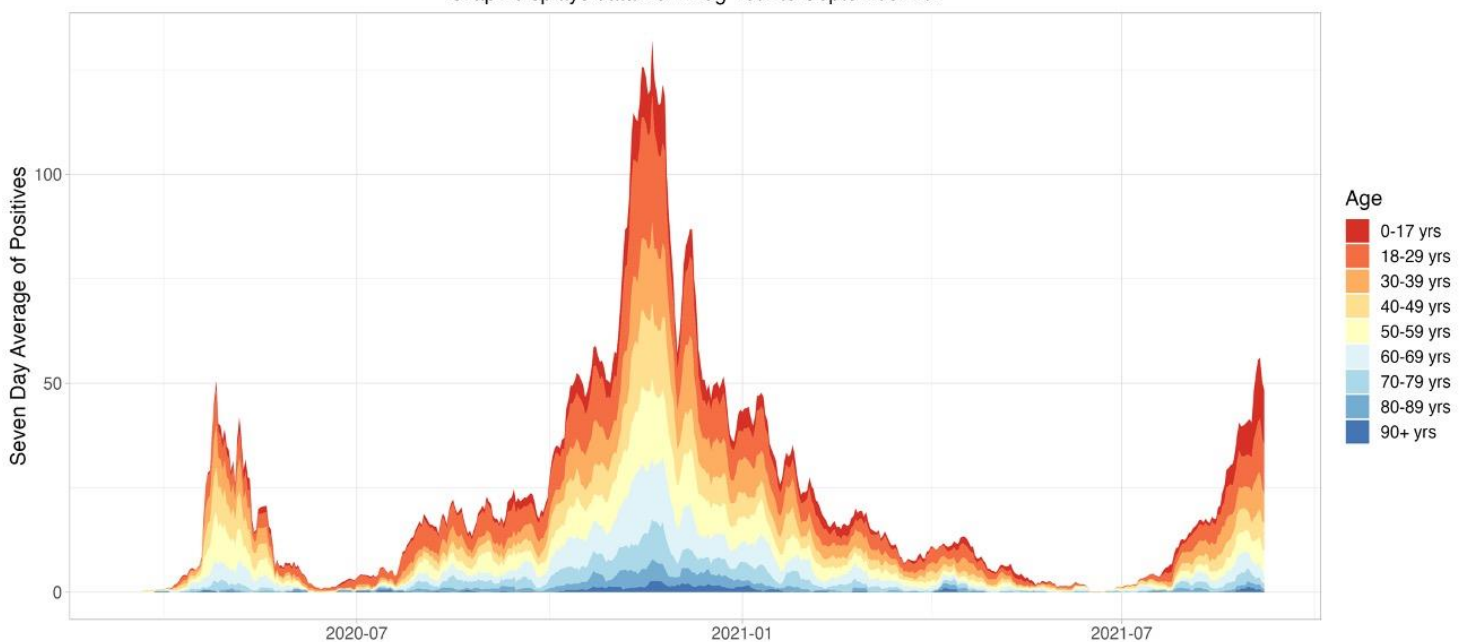
7 Day Rolling Average of Two Rivers

Graph displays data from April 1st to September 7th

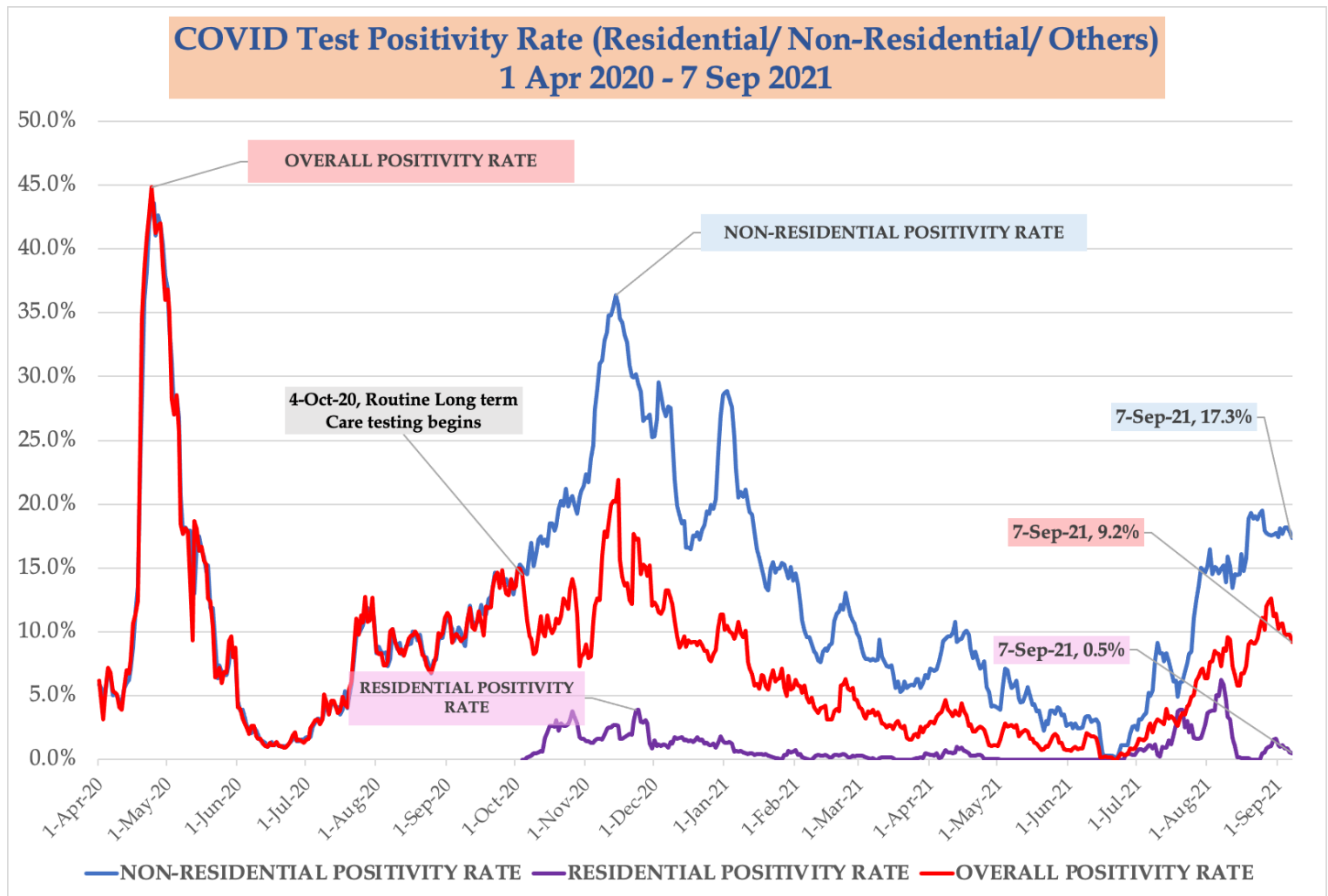


Daily Average of COVID-19 Cases in TRPHD by Age

Graph displays data from Aug 10th to September 7th



- The graphs below describe the average **test positivity rate (7-day rolling average)**⁸ in TRPHD from **April 1, 2020 - Aug 24, 2021**. The graph depicts the entire county including Buffalo, Dawson, Phelps, Franklin, Gosper, Harlan and Kearney counties.
- Graph describes all tests (overall positivity rate), those conducted **in residential facilities**, and those conducted outside residential facilities in the last 17 months⁹
- Graph may be read thus (for eg): “In the week Sep 1- Sep 7, **one out of every 11 COVID tests** conducted in TRPHD was positive; excluding long term care and other residential facilities, **one out of every 6 tests** was positive.”



⁸ For description of average positivity rate, see appendix 1

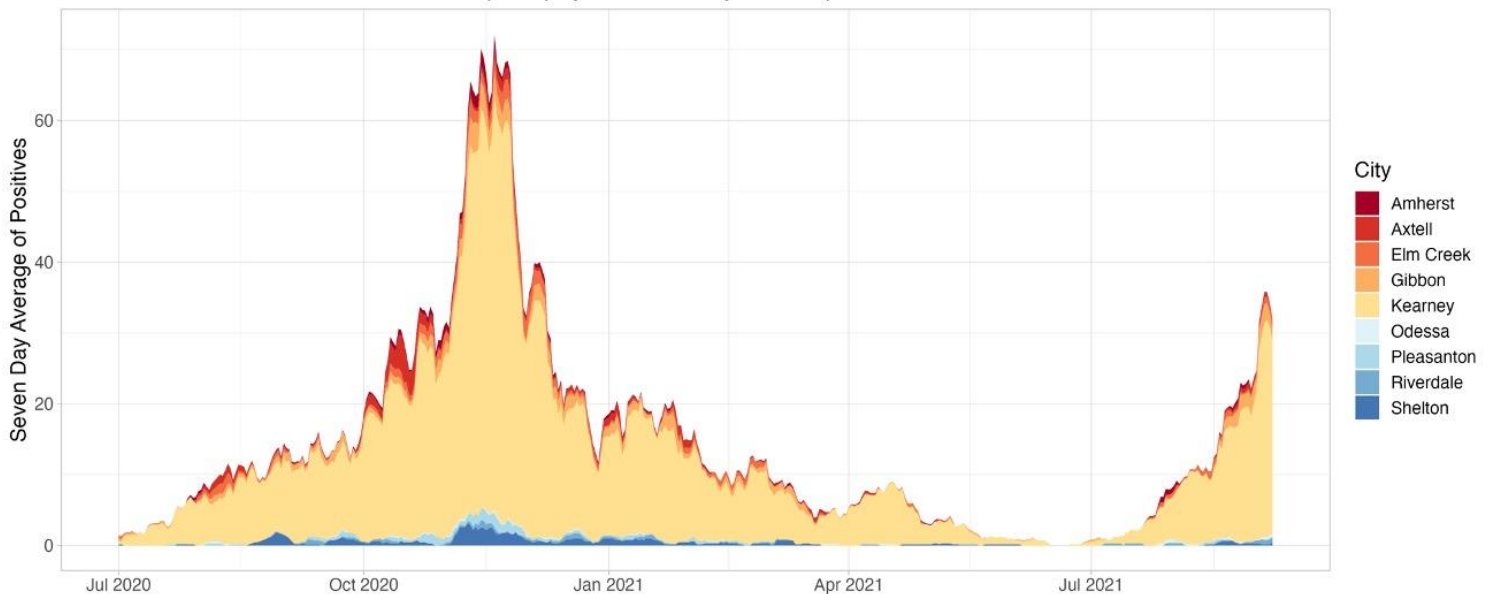
⁹ For information on residential facilities, please see appendix 3



- The following graphs describe the average **daily COVID cases (7-day rolling)** in three urban areas in Two Rivers Health Department.
- The urban areas are Kearney city and surrounding towns (**Kearney, Elm Creek, Pleasanton, Amherst, Riverdale, Gibbon, Shelton and Axtell - total 39,412 people**), Lexington city and surrounding towns (**Lexington, Overton, Elwood, Johnson Lake and Cozad - total 15,700 people**), Holdrege city and surrounding towns (**Holdrege, Loomis and Funk - total 5967 people**).¹⁰
- Time considered is from **July 1, 2020 - Sep 7, 2021**. Scales are different for all three graphs.
- The graph for Kearney city and surrounding areas is presented below.

7 Day Rolling Average of COVID-19 Cases by City

Graph displays data from July 1st to September 7th



Information Updated as of 9/7 at 8 p.m.

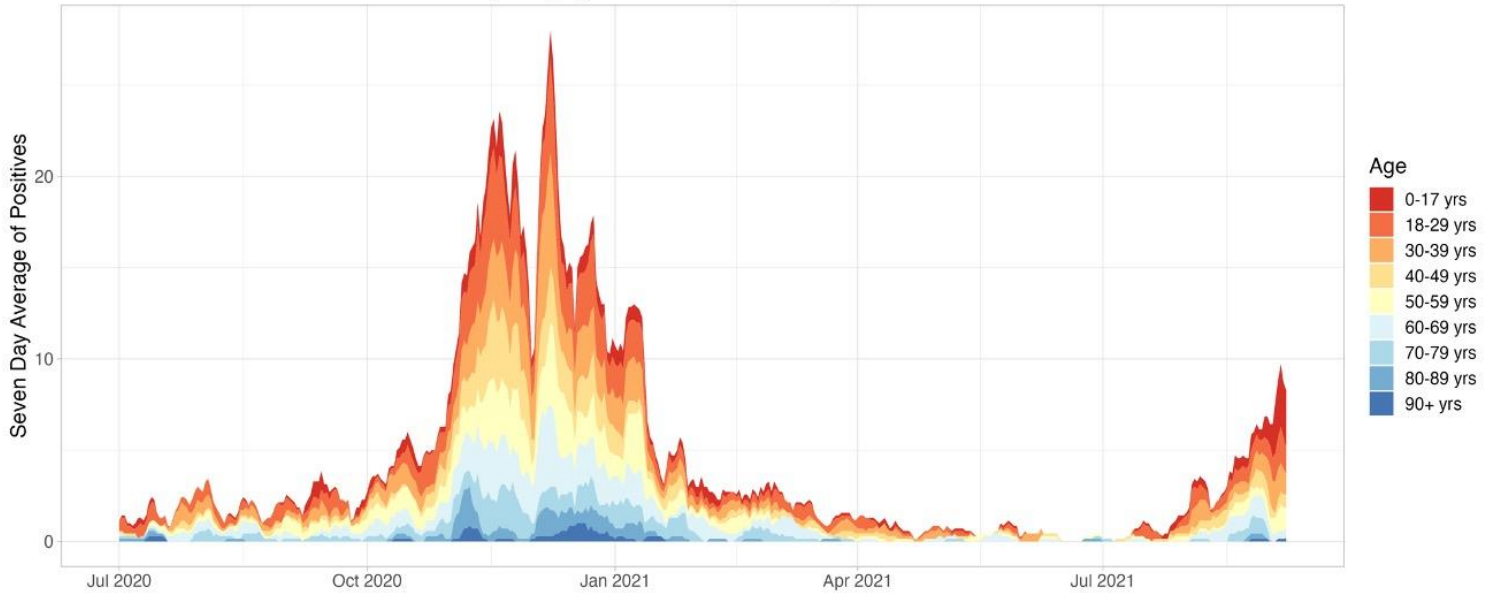
¹⁰ For details about each of the urban areas, please see appendix 5
516 W 11th Street, Suite 108
Kearney, NE 68845



- The **daily average (7-day rolling)** of positive cases in **Lexington** and **Holdrege** cities and surrounding towns between July 1, 2020 – Sep 7, 2021 are presented below.

7 Day Rolling Average of COVID-19 Cases by Age in Lexington Area

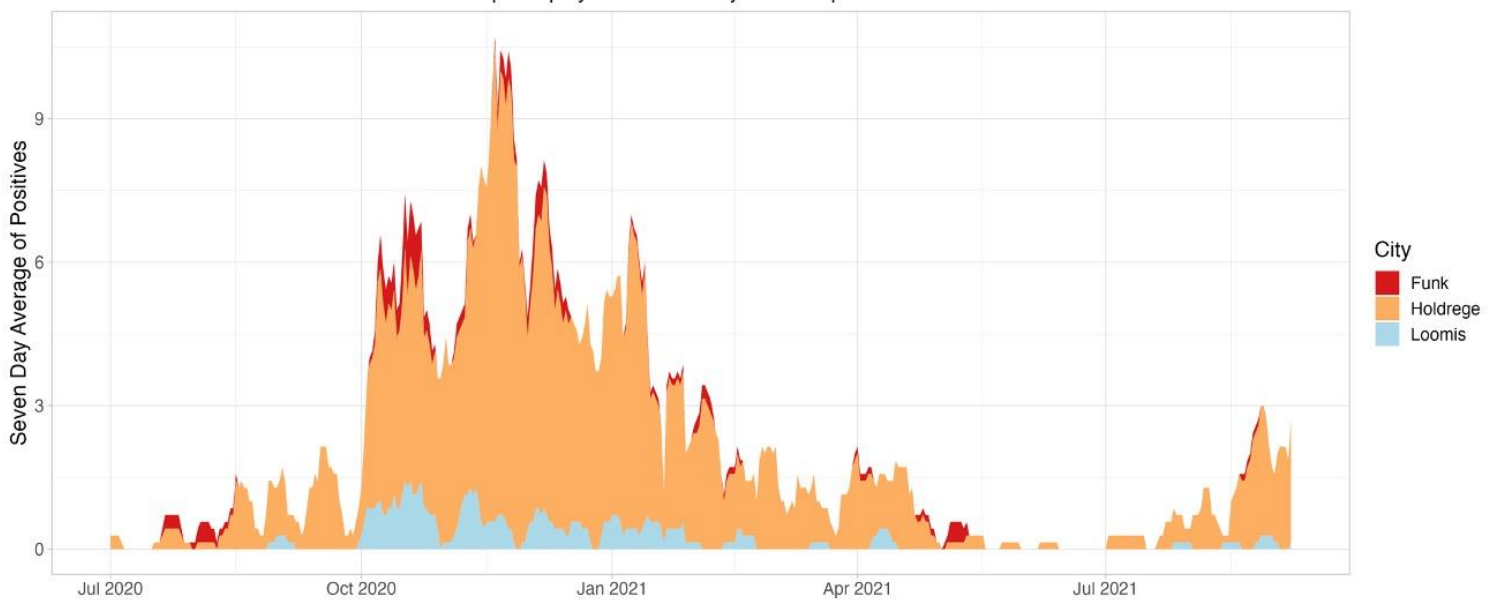
Graph displays data from July 1st to September 7th



(Lexington Area includes Lexington and towns in surround 15 miles)

7 Day Rolling Average of COVID-19 Cases by City

Graph displays data from July 1st to September 7th



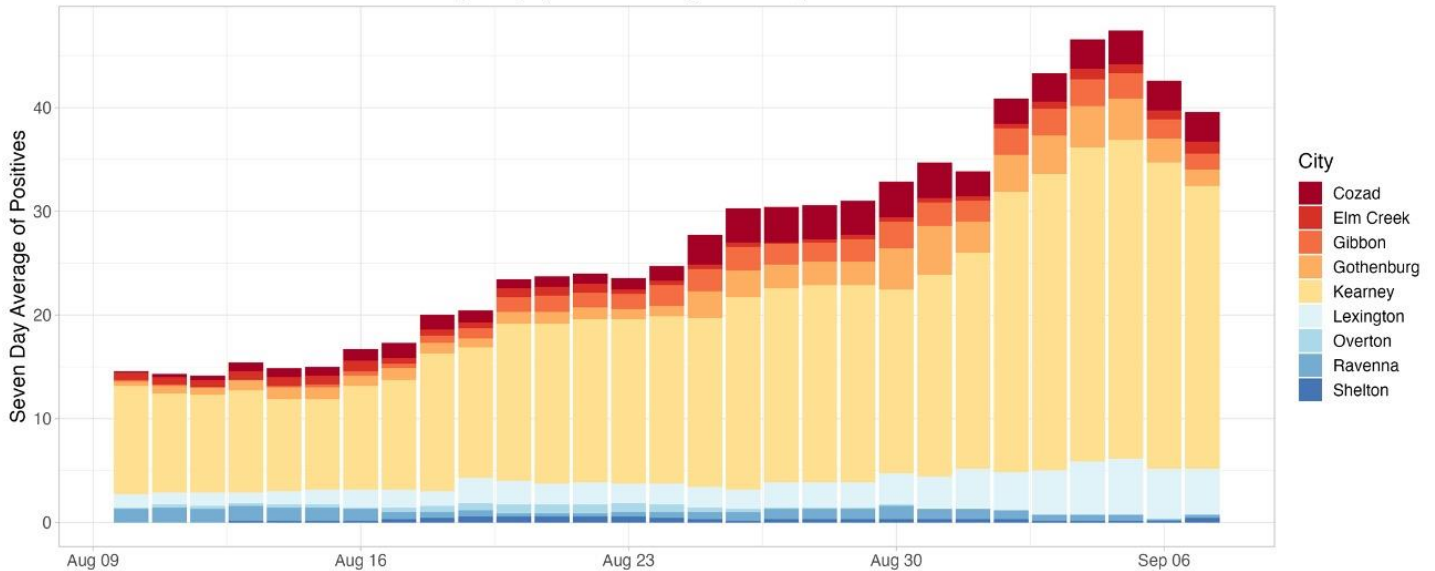
Information Updated as of 9/7 at 8 p.m.



- The following bar graphs describes the 7-day rolling averages by city for the past four weeks (Aug 10 - Sep 10) in TRPHD. The graph above shows cities in **Buffalo and Dawson** counties and the one below shows the graph for cities in **Gosper, Harlan, Kearney and Phelps** counties. The scale is different for both graphs.

7 Day Rolling Average of COVID-19 Cases Buffalo and Dawson County

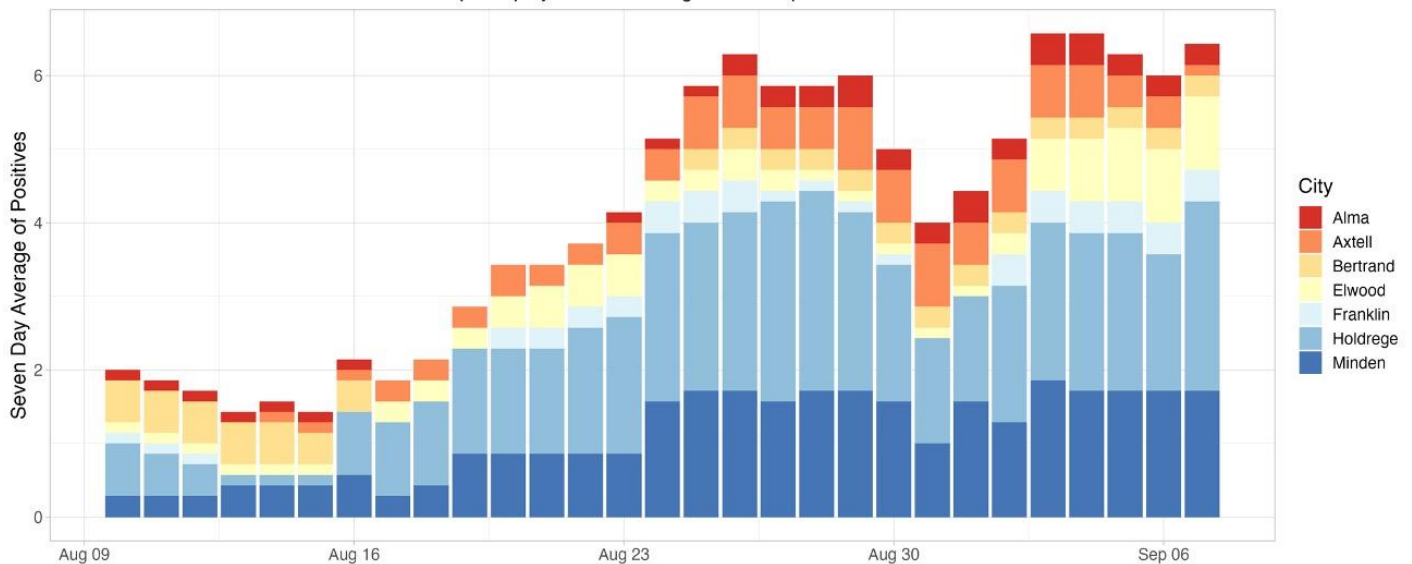
Graph displays data from Aug 10th to September 7th



Information Updated as of 9/7 at 8 p.m.

7 Day Rolling Average of COVID-19 Cases Gosper, Franklin, Kearney, and Phelps County

Graph displays data from Aug 10th to September 7th



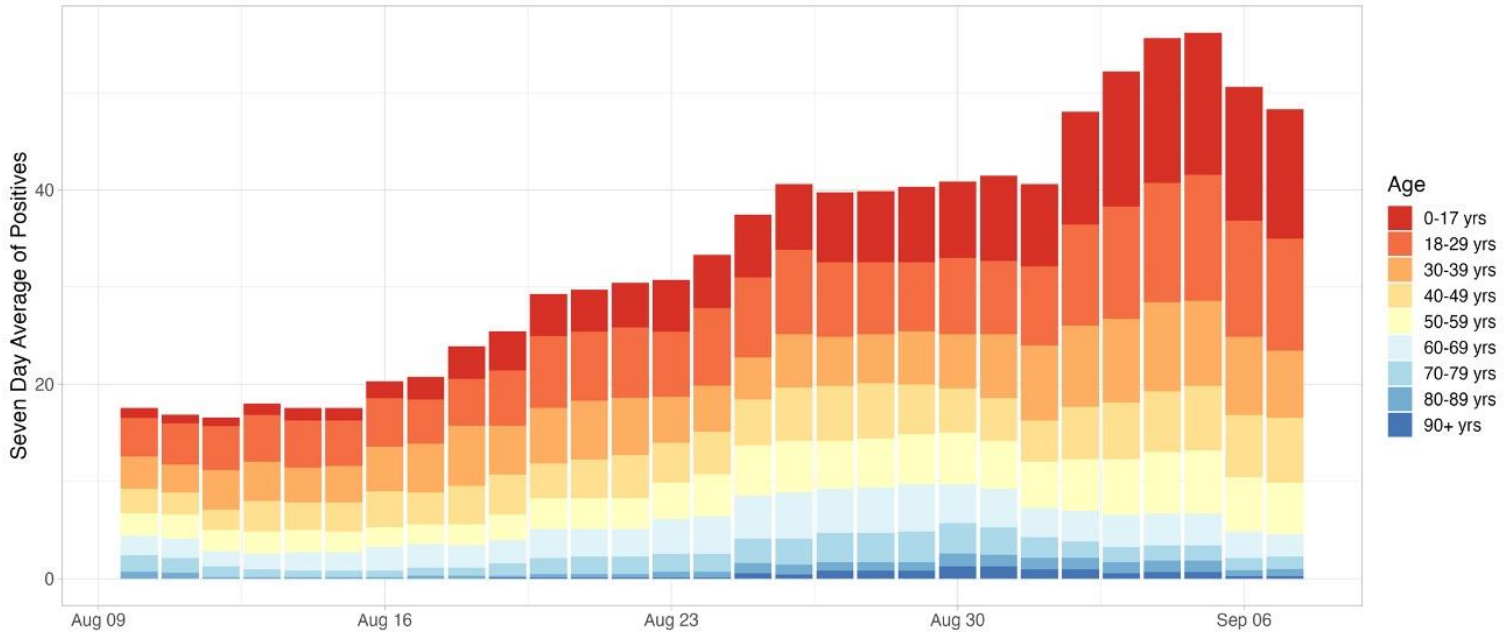
Information Updated as of 9/7 at 8 p.m.



- The graph below describes the **7-day rolling average** of cases from **Aug 10 – Sep 7** by age. The height of the graph corresponds to total cases and the thickness of each colored band corresponds to each age group.

7 Day Rolling Average of COVID-19 Cases in Two Rivers by Age

Graph displays data from Aug 10th to September 7th



Information Updated as of 9/7 at 8 p.m.



Weekly summary

- 340 cases of COVID-19 were recorded in TRPHD between September 1 & September 7, over 2/3rd of those among persons less than 40 years of age. Cases have increased by about 30% per week since August 1.
- About 1200 positive cases were detected in Buffalo county in the past 6 months. Over 60% of those positive cases (747 positive results) were recorded since August 1. Around 390 COVID-positive cases were detected in Dawson county in the last month, of these 247 (60%) tested positive since August 1.
- Limited supply of COVID testing reagents across the nation has created additional barriers and delays in ensuring universal testing. Contact tracing exercises have contracted dramatically to reflect staffing priorities and funding exigencies, only persons in specific age groups testing positive are currently being contacted in-person by the investigation team.
- As of Sep 6, 2021, 43% of TRPHD's total population and over half of the eligible population (12+years) has been fully vaccinated across the district. See weekly vaccination report at <https://www.trphd.org/covid-19/vaccination-reports.html> for details. In light of rising incidence rates connected to the newer delta variant, TRPHD strongly urges all unvaccinated vaccine-eligible residents to avail of the COVID vaccination through their healthcare provider, pharmacy or TRPHD. For schedule of vaccination clinics, see www.trphd.org
- All persons aged 12 and over are eligible for the vaccine. TRPHD has scheduled mobile vaccination clinics at over 15 sites across seven counties to distribute vaccines and to focus on areas of potential shortfall. Those eligible for the vaccine are advised to refer to the vaccination clinic schedule at www.trphd.org

To conclude, weekly case weekly COVID counts have risen by roughly 30% every week since August 1. Residents under 40 years account for 2/3rds of all new cases in the past week, even as a nationwide shortage of lab supplies has dramatically curtailed access to testing. COVID-related hospitalizations account for 20% of all beds in TRPHD. 43% of the total population of TRPHD district and 53% of all adults are fully vaccinated. TRPHD has scheduled mobile vaccination clinics 5 days a week at 9 different sites across the district, the schedule for the clinics can be found at <https://www.trphd.org/covid-19/event-calendar.html>. Those eligible for the vaccine are advised to contact their physician or refer to the vaccination clinic schedule. In the meantime, unvaccinated residents are advised to follow strict preventive measures (social distancing, correct and consistent masking) at all times, especially in light of increased transmission of the delta variant.



APPENDIX 1

Background

The Two Rivers Public Health Department (TRPHD) covers 7 counties in central Nebraska, reaching 97,132 people who live and work in the health district spread across roughly 4663 square miles. Over three quarters of residents live in Buffalo and Dawson county, a tenth live in Phelps county, and the remaining 15% is spread somewhat comparably among the four counties of Kearney, Harlan, Franklin and Gosper in decreasing order of population. The largest cities are Holdrege (pop. 5408), Lexington (pop. 10115) and Kearney (pop. 33867) meaning that well over half the residents of TRPHD live in three cities, and over a third are in Kearney alone. The population of all 7 counties in TRPHD are shown below.

County	Population
Buffalo	49,659
Dawson	23,595
Franklin	2,979
Gosper	1,990
Harlan	3,380
Kearney	6,495
Phelps	9,034
TRPHD total	97,132
Nebraska state	1,934,408
United States	328,239,523

- Data is presented as 7-day rolling averages for daily numbers and absolute counts for cumulative cases. The 7-day rolling average is the sum of all cases reported on that day plus the previous six divided by 7.
- Total (cumulative) cases refer to all COVID cases that have been confirmed by testing in the district since the beginning of the pandemic in TRPHD (March 19)
- All tests refers to all types of tests conducted across the Health District, including laboratory-based PCR and rapid antigen.
- Average positivity rate refers to a seven-day rolling average positivity rate, which is the sum of all cases for that day and the previous six divided by the sum of all tests done in that day and the previous six. This is also the same as the “weekly positivity rate”
- In cases that call for comparison across larger areas (counties v/s state of Nebraska, for eg), we present the count per 100,000 population. 100,000 roughly corresponds to the population of Two Rivers Health District (97,132)
- In cases that call for comparison between cities, (Kearney v/s Minden for eg), we present a count per 10,000 population. 10,000 roughly corresponds to the population of Lexington (10,115), the second largest city in TRPHD.
- Deaths due to COVID-19 are identified in death certificates (usually COVID -19 is the Underlying Cause of Death) and attested by the attending physician or medical examiner/ coroner. Each case is further investigated by TRPHD over telephone - the next



of kin is contacted, condolences conveyed and exit interviews conducted by Department staff before releasing a public notification. For further details on the procedure for COVID-19 death certification, please see <https://www.cdc.gov/nchs/data/nvss/vsrg/vsrg03-508.pdf>

- For calculation, we use the 2019 mid-year census estimate (American Community Survey, ACS) and data from The Atlantic's COVID tracking project (<https://covidtracking.com/data>)

APPENDIX 2

Total (cumulative) cases per 100,000 population

The total/ cumulative case counts are the **total** cases confirmed by testing in an area (county, city, state or health district) calculated from the first recorded case (in case of TRPHD this is March 19, 2020). This is expressed as a fraction of the total population of the area and standardized to 100,000 persons. A population of 100,000 is used to compare counties as it is comparable to the overall population of Two Rivers Health District (97,032).

Total (cumulative) cases / 100,000 persons is calculated as:

[(Total positive test results for residents in the region)] / (mid-year population) * 100,000

Daily average of cases per 100,000 population

The daily average (7-day rolling) of cases is the sum of all cases reported on that day plus the previous six divided by 7. This is expressed as a fraction of the total population of the area and standardized to 100,000 persons. A population of 100,000 is used to compare counties as it is comparable to the overall population of Two Rivers Health District (97,032).

Daily average of cases / 100,000 persons is calculated as:

[(7-day rolling average of cases among residents)] / (mid-year population) * 100,000

APPENDIX 3

About a third of all tests conducted since March in the district have been availed by residents or staff of residential facilities. "Residential facilities" include long-term care facilities, in-patient psychiatry services, retirement villages, veterans' homes and correctional facilities within Two Rivers Health District.

Considering the specific nature of COVID risk of long-term residents of institutional facilities and taking into account the frequent testing performed at facilities, we present numbers separately for long term care facilities and others in the district.



APPENDIX 4

Vaccine-eligible population

The total COVID-19 vaccine-eligible population of Two Rivers Health District is about 76,002. This includes all residents over the age of 16 years living in the seven counties that make up the district. The table below describes the eligible population in each of the seven counties divided by age category.

	16-29 YRS	30-49 YRS	50-64 YRS	65+ YRS	TOTAL(16+ YRS)
TRPHD	19580	22863	17760	15799	76002
BUFFALO	11828	11910	8184	6863	38785
DAWSON	4301	5723	4334	3696	18054
FRANKLIN	391	586	717	809	2503
GOSPER	232	418	532	526	1708
HARLAN	459	649	735	845	2688
KEARNEY	985	1508	1343	1239	5075
PHELPS	1384	2069	1915	1821	7189

Vaccines used in TRPHD

In the first phase, COVID-19 vaccines have been approved for use in all persons over the age of 16 years. Currently, Pfizer and Moderna vaccine formulations are being offered in Two Rivers Health District. Use of the Johnson & Johnson (Janssen) vaccine formulation has been paused pending further scrutiny by the Food and Drug Administration (FDA).

The Nebraska Department of Health and Human Services paused use of the Johnson & Johnson (Janssen) COVID-19 vaccine after Centers for Disease Control and Prevention (CDC) and Food and Drug Administration (FDA) recommendations following reports of six women who have been hospitalized with severe blood clots after receiving the vaccine dose, including one woman in Douglas county. The women were aged between 18-48 years. Vaccine use was reinstated on April 26, 2021 and is now available at private pharmacies across the state.

To date, over 6.8 million doses of Janssen vaccine have been administered in the United States, over 31,500 in Nebraska, and 1560 in Two Rivers Health District.

Symptoms in the 6 hospitalized individuals included headache, back pain, other unexplained pain. Symptoms typically began 6-13 days after vaccination, and hospital admission was within 15 days, on average. More than 55% of the Janssen vaccine was administered before 22nd of March in Two Rivers Health District.



APPENDIX 5

Methods & Definitions

To better understand the course of the COVID-19 pandemic in Kearney, Lexington and Holdrege, we created ‘urban areas’ that included both the city and its surrounding towns. We included all towns within 20 miles of Kearney city, 15 miles of Lexington and 10 miles of Holdrege within each city’s urban area. The respective populations of all 7 counties in TRPHD are shown below. Kearney city accounts for over third of the population of TRPHD.

County	Population
Buffalo	49,659
Dawson	23,595
Franklin	2,979
Gosper	1,990
Harlan	3,380
Kearney	6,495
Phelps	9,034
TRPHD total	97,132
Nebraska state	1,934,408

Thus “Kearney area” includes Kearney city as well as Elm Creek, Pleasanton, Amherst, Riverdale, Odessa, Gibbon, Shelton and Axtell.

“Lexington area” includes Lexington city as well as Overton, Johnson Lake and Cozad.

“Holdrege area” includes Holdrege city, Loomis and Funk.

The populations of cities and villages is described below. Also included are Minden and Gothenburg, used as comparison points in descriptive statistics about the area.

CITY	POPULATION
Kearney	33867
Elm Creek	949
Axtell	751
Pleasanton	359
Riverdale	179
Amherst	253
Gibbon	1869
Shelton	1055
Odessa	130
KEARNEY URBAN AREA (TOTAL)	39412
Lexington	10115
Overton	567



Johnson Lake	600
Elwood	683
Cozad	3735
LEXINGTON URBAN AREA (TOTAL)	15,700
Holdrege	5408
Funk	183
Loomis	376
HOLDREGE URBAN AREA (TOTAL)	5967
Gothenburg	3489
Minden	2890

For presenting data, we selected 3 time frames:

- a) April 1 - current (From the beginning of the pandemic to most recent Tuesday)
- b) July 01 - current (From the beginning of second sustained 'wave' in daily case counts to current)
- c) Previous 4 weeks
 - Data is presented as 7-day rolling averages for daily numbers and absolute counts for cumulative cases. The 7-day rolling average is the sum of all cases reported on that day plus the previous six divided by 7.
 - Cumulative cases refer to all cases that have been confirmed in the district since the beginning of the pandemic in TRPHD (March 19)
 - Average positivity rate refers to a seven-day rolling average positivity rate, which is the sum of all cases for that day and the previous six divided by the sum of all tests done in that day and the previous six
 - $\text{Average positivity rate (in \%)} = \frac{\text{Sum of positive cases for current day} + \text{previous 6 days}}{\text{Sum of total tests for current day} + \text{previous six days}}$
 - In cases that call for comparison across larger areas (counties v/s state of Nebraska, for eg), we present the count per 100,000 population. 100,000 roughly corresponds to the population of Two Rivers Health District (97,132)
 - In cases that call for comparison between cities, (Kearney v/s Minden for eg), we present a count per 10,000 population. 10,000 roughly corresponds to the population of Lexington (10,115), the second largest city in TRPHD.
 - For calculation, we use the 2019 mid- year estimate (American Community Survey, ACS) and data from The Atlantic's COVID tracking project (<https://covidtracking.com/data>)