



COVID-19 Vaccination Report - Two Rivers Health District : Dec 15 - Apr 27

The three graphs depict the current status of COVID-19 vaccination in Two Rivers Public Health District (TRPHD) as of March 16, 2021. This includes residents of Buffalo, Dawson, Franklin, Gosper, Harlan, Kearney & Phelps counties (97,132). Of these, 76002 persons are eligible for the vaccine (aged 16 years or more)¹

- Graphs 1 & 2 show relative number of **residents of each county** who have received one or two shots of the vaccine.
 - **Graph 1** shows the number of **eligible persons (16 + years)** per county, and orders the counties by decreasing percentage of persons who received one or two doses of the vaccine.
 - **Graph 2** shows the number of persons **aged 40-64 years** in the district, and orders each county by decreasing percentage of persons who received one dose and those fully vaccinated.
- **Graph 3** shows total vaccine doses available per month by residents of Two Rivers Health District. Each bar corresponds to the institution providing the vaccine dose and the length of the graph indicates the number of doses.
- **Graphs 4-5** describe TRPHD residents who received their first and second dose of COVID vaccine. "Second dose" also includes the single-dose Johnson & Johnson (Janssen) vaccine.
- Vaccinated persons are described by age group (16-29, 30-49, 50-64, 65+ years). Data is described monthly from December, 2020 - April, 2021.

Key Takeaways

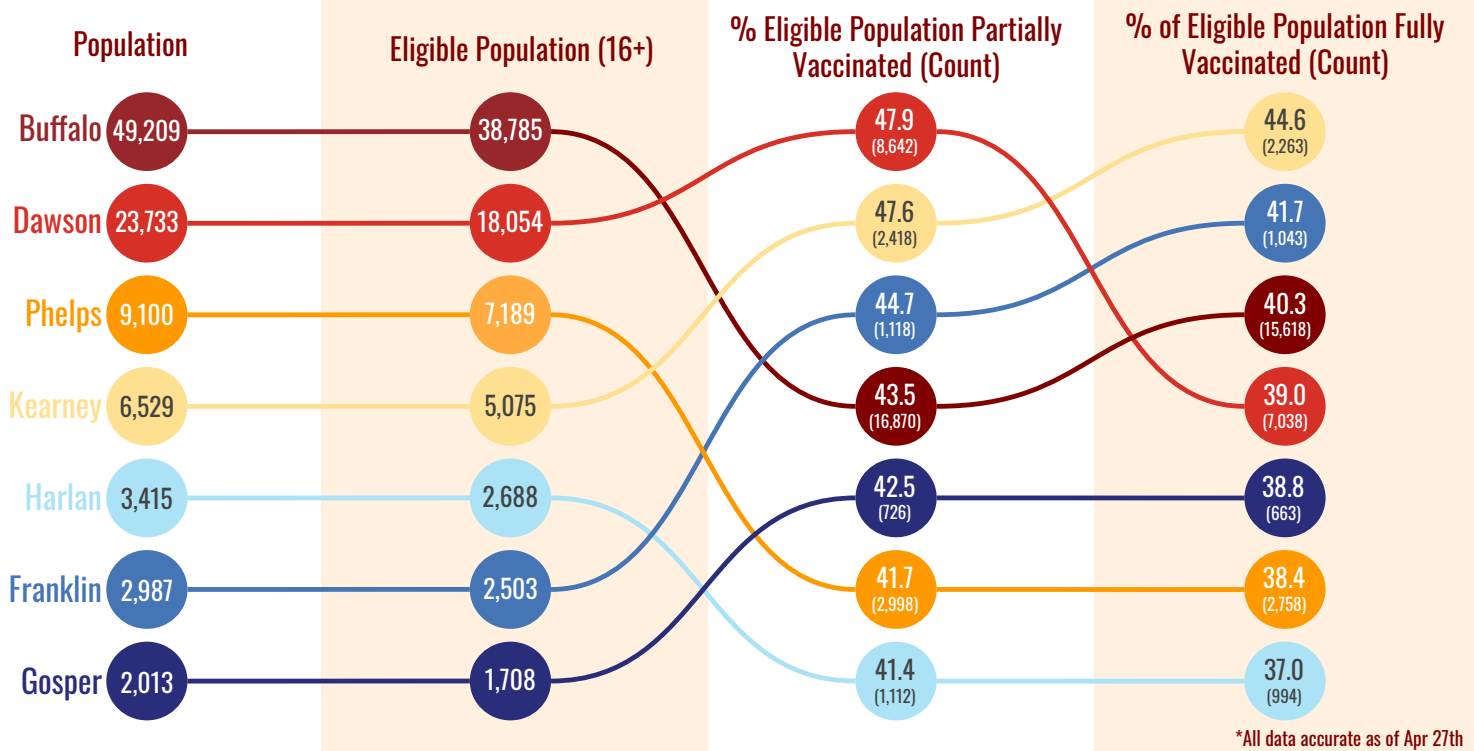
1. *As of April 26, 2021, 39.7% of TRPHD's eligible population has been fully vaccinated. However, rate of vaccinations has slowed in April compared to previous months, in spite of expanded age limits..*
2. *Over 40% of residents aged 40-64 years have been fully vaccinated. However, even as Dawson, Buffalo and Phelps counties are on track to fully vaccinate over half of 40-64 year olds in the coming weeks, that number is likely to be about 33% for Phelps and Harlan counties*
3. *The decline in overall vaccination first doses given across the district in April, especially among 16-29 and 30-49 year olds is concerning. The rate of younger persons availing the vaccine in April is lower than of seniors aged 65 years and over in January-February.*
4. *Two Rivers Health Department has scheduled mass vaccination clinics at multiple sites across the seven counties to distribute vaccines and to focus on areas of potential shortfall. Those eligible for the vaccine are advised to contact their physician or register at Two Rivers Health Department (www.trphd.org).*

¹ For details on eligible persons by county, see appendix 1



- Vaccine formulations by Pfizer and Moderna (2 doses) and Johnson & Johnson (single dose) are calculated accordingly
- Each county is depicted by a colored circle, and the relative position of each corresponds to the proportion vaccinated. Actual numbers (count) are included in parenthesis.
- Data described from Dec 15, 2020 - April 26, 2021. All residents of the seven counties over 16 years are included.
- Overall, 39.7% of the eligible population in Two Rivers Health District is now fully vaccinated.

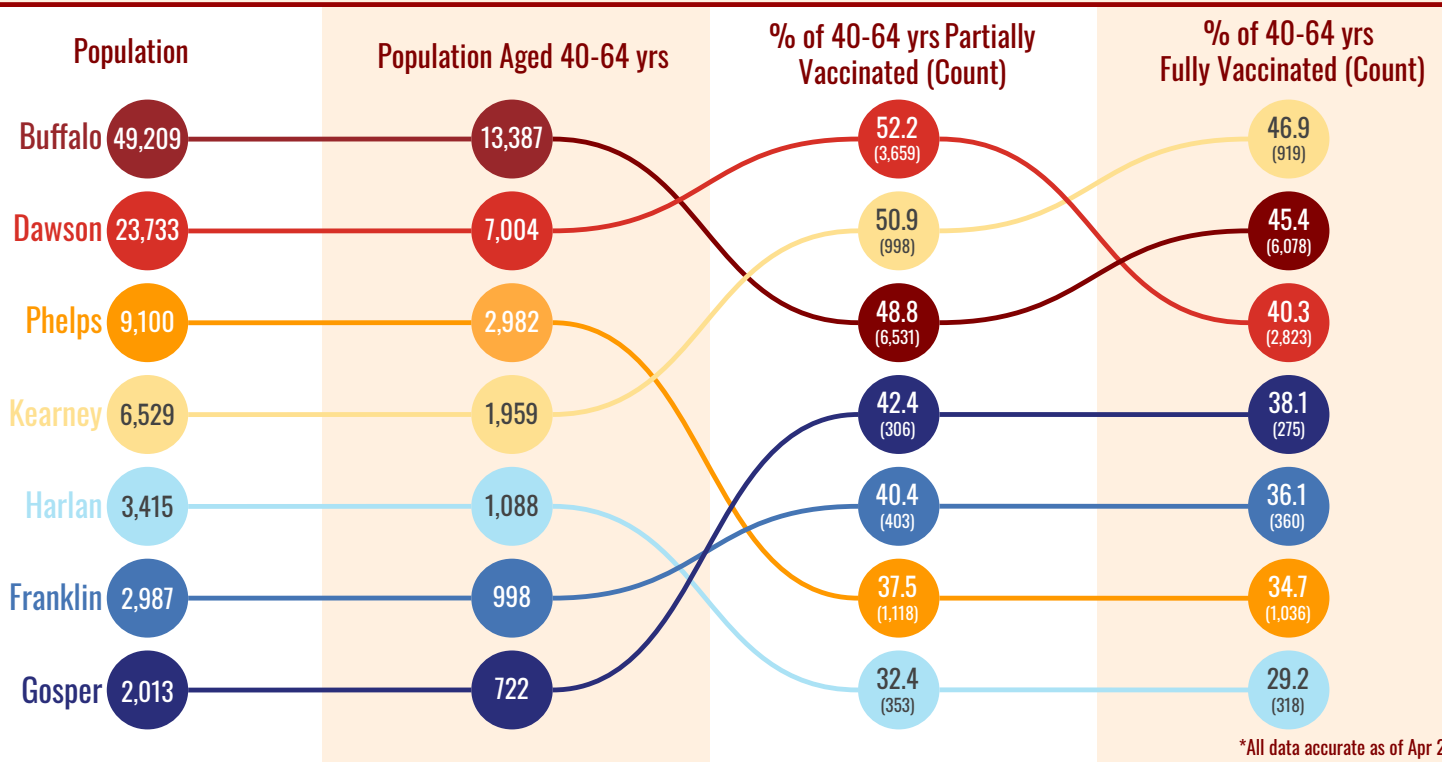
Vaccinations of Eligible Population in TRPHD





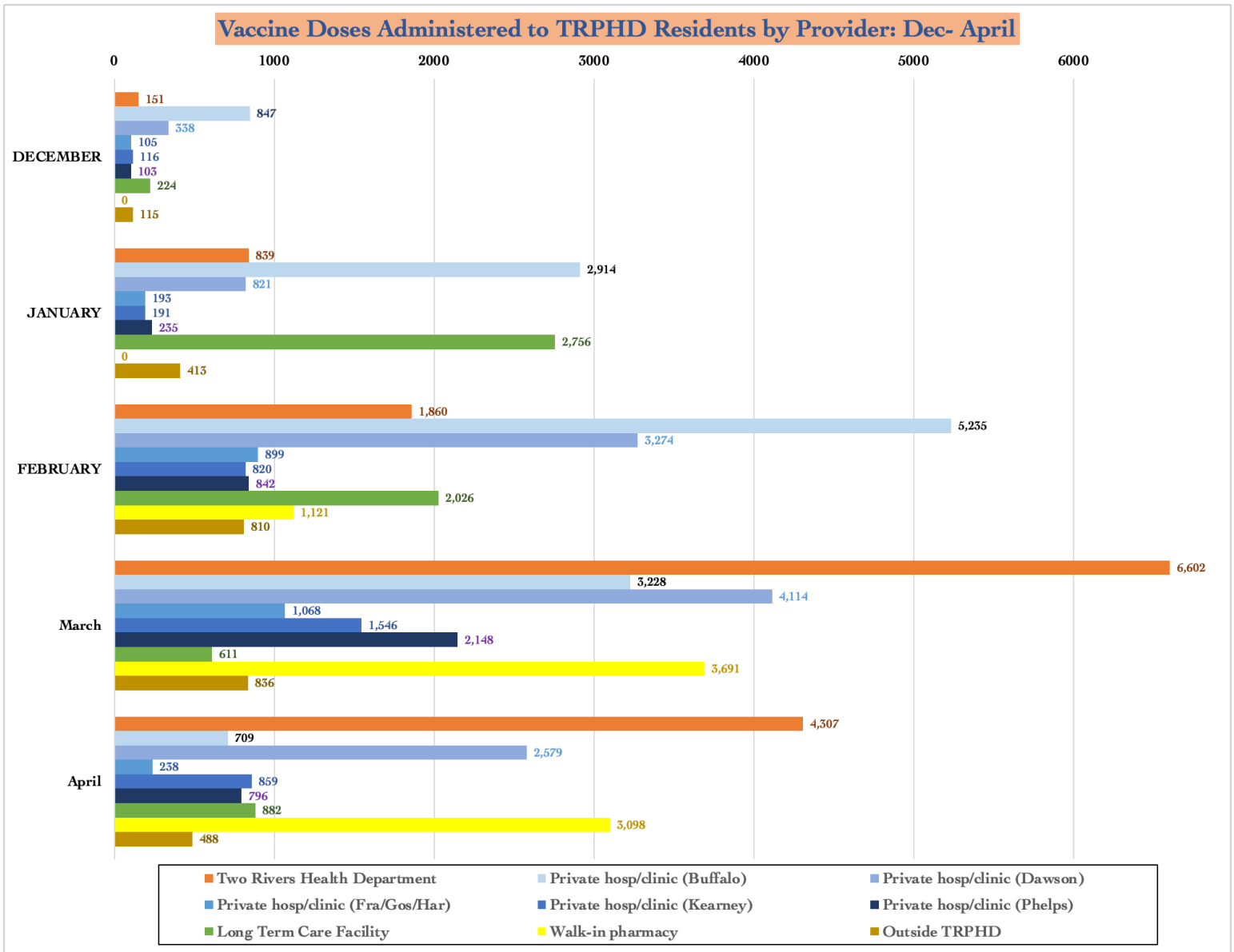
- Vaccine formulations by Pfizer and Moderna (2 doses) and Johnson & Johnson (single dose) are calculated accordingly
- Each county is depicted by a colored circle, and the relative position of each corresponds to the proportion vaccinated. Actual numbers (count) are included in parenthesis.
- Data is described from **Dec 15, 2020 - April 26, 2021**. All residents of the seven counties **aged 40-64** years are included.
- Overall, 42% of residents aged 40-64 years in Two Rivers Health District are now fully vaccinated.

Vaccinations of 40-64 yrs in TRPHD



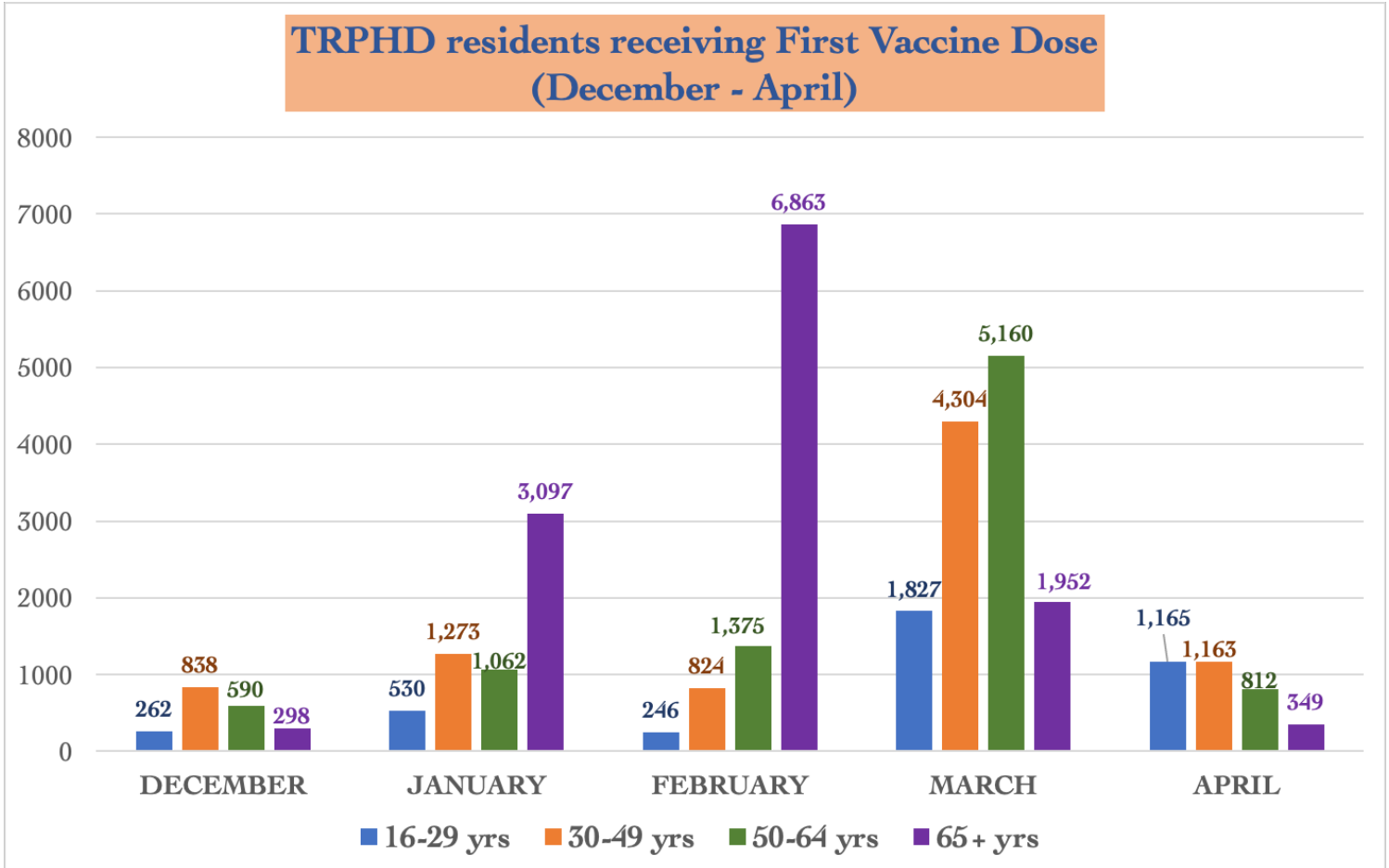


- The graph describes **all vaccine doses** provided to TRPHD residents between December 15, 2020 – April 26, 2021 grouped by vaccine provider.
- Both first and second doses are included in the graph. Length of the bar graph corresponds to the number of doses received that month
- The actual doses provided by each entity is indicated in the bar graph.



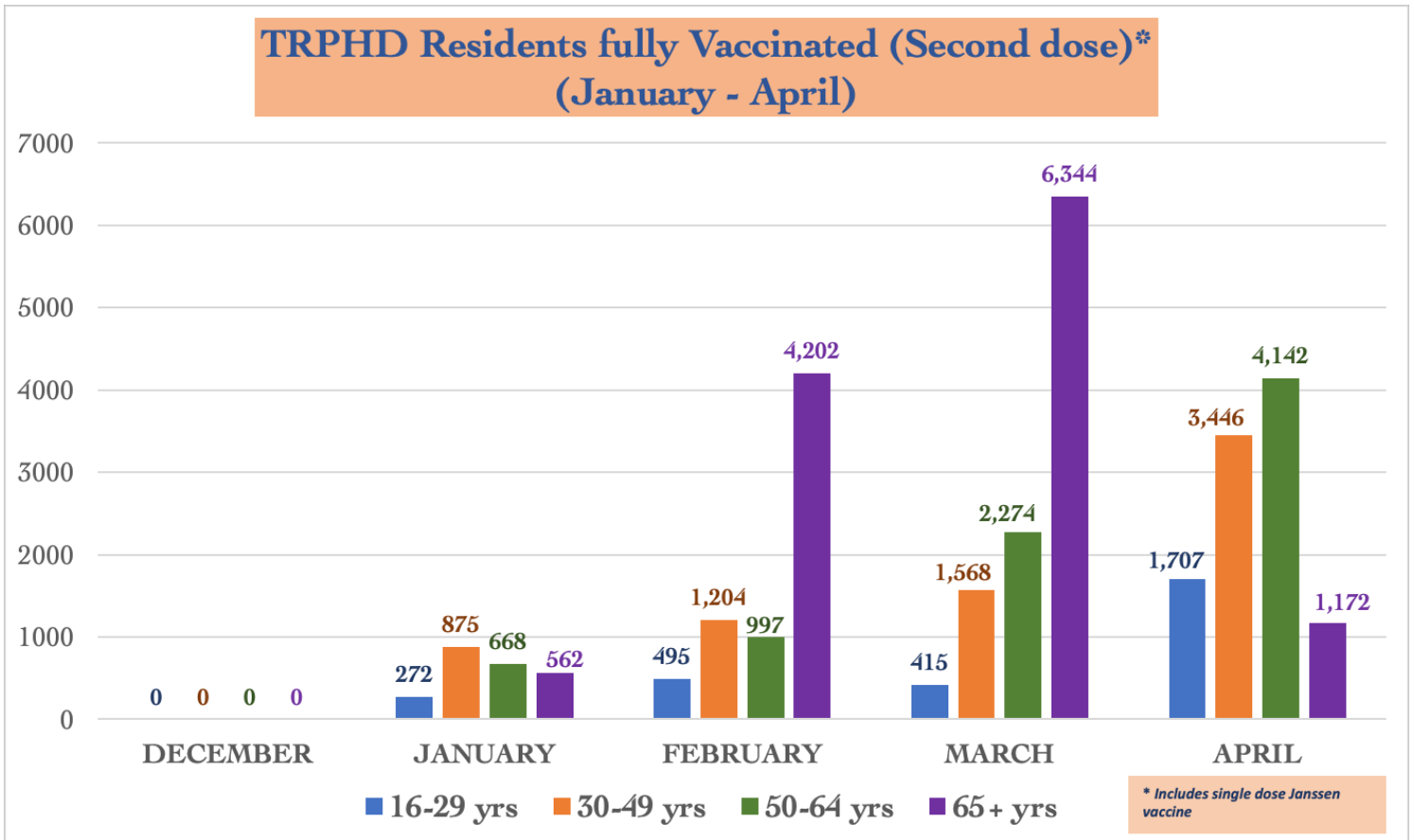


- The graph describes **all first doses of the vaccine** availed by TRPHD residents between December 15, 2020 – April 26, 2021.
- Vaccinated persons are described by age group (16-29, 30-49, 50-64, 65+ years). Data is described monthly from December, 2020 – April, 2021.
- Persons shown in this graph may be considered ‘partially vaccinated’ and typically precede the second dose by 3-5 weeks.





- The graph describes **all second doses of the vaccine** availed by TRPHD residents between December 15, 2020 - April 26, 2021. Graph also includes those who received the single dose Johnson & Johnson (Janssen) vaccine.
- Vaccinated persons are described by age group (16-29, 30-49, 50-64, 65+ years). Data is described monthly from December, 2020 - April, 2021.
- Persons shown in this graph may be considered 'fully vaccinated' and typically follow the first vaccine dose by 3-5 weeks.





APPENDIX 1

Background

The Two Rivers Public Health Department (TRPHD) covers 7 counties in central Nebraska, reaching 97,132 people who live and work in the health district spread across roughly 4663 square miles. Over three quarters of residents live in Buffalo and Dawson county, a tenth live in Phelps county, and the remaining 15% is spread somewhat comparably among the four counties of Kearney, Harlan, Franklin and Gosper in decreasing order of population. The largest cities are Holdrege (pop. 5408), Lexington (pop. 10115) and Kearney (pop. 33867) meaning that well over half the residents of TRPHD live in three cities, and over a third are in Kearney alone. The population of all 7 counties in TRPHD are shown below.

County	Population
Buffalo	49,659
Dawson	23,595
Franklin	2,979
Gosper	1,990
Harlan	3,380
Kearney	6,495
Phelps	9,034
TRPHD total	97,132
Nebraska state	1,934,408
United States	328,239,523

Vaccine-eligible population

The total COVID-19 vaccine-eligible population of Two Rivers Health District is about 76,002. This includes all residents over the age of 16 years living in the seven counties that make up the district. The table below describes the eligible population in each of the seven counties divided by age category.

	16-29 YRS	30-49 YRS	50-64 YRS	65+ YRS	TOTAL(16+ YRS)
TRPHD	19580	22863	17760	15799	76002
BUFFALO	11828	11910	8184	6863	38785
DAWSON	4301	5723	4334	3696	18054
FRANKLIN	391	586	717	809	2503
GOSPER	232	418	532	526	1708
HARLAN	459	649	735	845	2688
KEARNEY	985	1508	1343	1239	5075
PHELPS	1384	2069	1915	1821	7189